

Anti-FBP2 antibody (1-339) (STJ111892)

GENERAL INFORMATION

Product Type	Primary antibodies
Applications	WB/IF/ICC/ELISA
Host / Source	Rabbit
Reactivity	Mouse/Rat

PRODUCT PROPERTIES

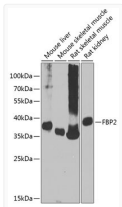
Clonality	Polyclonal
Concentration	Lot specific
Conjugation	Unconjugated
Purification	Affinity purification
Dilution Range	WB:1:500-1:2000 IF/CC:1:50-1:200 ELISA:Recommended starting concentration is 1 µg/mL. Please optimize the concentration based on your specific assay requirements.
Formulation	PBS with 0.02% Sodium Azide, 50% Glycerol, pH 7.3.
Isotype	IgG
Molecular Weight	Protein Mw: 37kDa Observed Mw: 36kDa
Storage Instruction	Store at -20°C for up to 1 year from the date of receipt, and avoid repeat freeze-thaw cycles.

TARGET INFORMATION

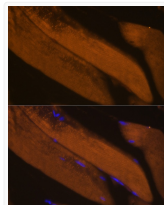
Gene ID	8789
Gene Symbol	FBP2
UniProt ID	F16P2_HUMAN
Immunogen Region	1-339
Immunogen Sequence	MTDRSPFETDMLTLTRYVME KGRQAKGTGELTQLLSMLT AIKAISSAVRKAGLAHLYGI AGSVNVTGDEVKKLDVLSNS LVINMQSSYSTCVLVSEEN KDAIITAKEKRGKYVVCDFP LDGSSNIDCLASIGTIFAIY RKTSEDEPSEKDALQCGRNI VAAGYALYGSATLVALSTGQ GVDLFMLDPALGEFVLVEKD VKIKKKGKIYSLNEGYAKYF DAATTEYVQKKKFPEDGSA
Specificity	Recombinant fusion protein containing a sequence corresponding to amino acids 1-339 of human FBP2 (NP_003828.2).

ADDITIONAL INFORMATION

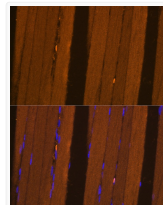
Note STRICTLY FOR FURTHER SCIENTIFIC RESEARCH USE ONLY (RUO). MUST NOT TO BE USED IN DIAGNOSTIC OR THERAPEUTIC APPLICATIONS.



Western blot analysis of various lysates using FBP2 Rabbit pAb (STJ111892) at 1:1000 dilution. Secondary antibody: HRP-conjugated Goat anti-Rabbit IgG (H+L) (STJS000856) at 1:10000 dilution.
Lysates/proteins: 25 µg per lane.
Blocking buffer: 3% nonfat dry milk in TBST.
Detection: ECL Basic Kit
Exposure time: 90s.



Immunofluorescence analysis of paraffin-embedded Mouse skeletal muscle using FBP2 Rabbit pAb (STJ111892) at dilution of 1:100. Secondary antibody: Cy3-conjugated Goat anti-Rabbit IgG (H+L) (STJS001166) at 1:500 dilution. Blue: DAPI for nuclear staining.



Immunofluorescence analysis of paraffin-embedded Rat skeletal muscle using FBP2 Rabbit pAb (STJ111892) at dilution of 1:100. Secondary antibody: Cy3-conjugated Goat anti-Rabbit IgG (H+L) (STJS001166) at 1:500 dilution. Blue: DAPI for nuclear staining.