

## Anti-S100A9 antibody (20-114) (STJ111884)

### GENERAL INFORMATION

Product Type	Primary antibodies
Applications	WB/IHC-P/IF/ICC/ELISA
Host / Source	Rabbit
Reactivity	Human/Mouse/Rat

### PRODUCT PROPERTIES

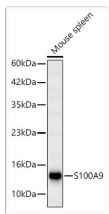
Clonality	Polyclonal
Concentration	Lot specific
Conjugation	Unconjugated
Purification	Affinity purification
Dilution Range	WB:1:500-1:1000 IHC-P:1:50-1:200 IF/CC:1:50-1:200 ELISA:Recommended starting concentration is 1 µg/mL. Please optimize the concentration based on your specific assay requirements.
Formulation	PBS with 0.09% Sodium Azide, 50% Glycerol, pH7.3.
Isotype	IgG
Molecular Weight	Protein Mw: 13kDa Observed Mw: 14kDa
Storage Instruction	Store at -20°C for up to 1 year from the date of receipt, and avoid repeat freeze-thaw cycles.

### TARGET INFORMATION

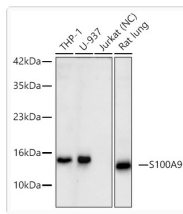
Gene ID	<a href="#">6280</a>
Gene Symbol	<a href="#">S100A9</a>
UniProt ID	<a href="#">S10A9_HUMAN</a>
Immunogen Region	20-114
Immunogen Sequence	HQYSVKLGHPDTLNQGEFKE LVRKDLQNFLKKNKNEKVI EHIMEDLDTNADKQLSFEEF IMLMARLTWASHEKMHEGDE GPGHHHKPGLGEGTP
Specificity	A synthetic peptide corresponding to a sequence within amino acids 20-114 of human S100A9 (NP_002956.1).

### ADDITIONAL INFORMATION

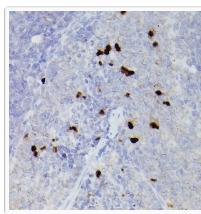
Note	STRICTLY FOR FURTHER SCIENTIFIC RESEARCH USE ONLY (RUO). MUST NOT TO BE USED IN DIAGNOSTIC OR THERAPEUTIC APPLICATIONS.
------	---



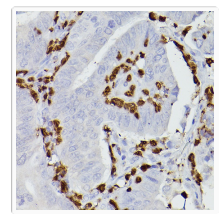
Western blot analysis of lysates from Mouse spleen using S100A9 Rabbit pAb (STJ111884) at 1:1000 dilution incubated overnight at 4 °C. Secondary antibody: HRP-conjugated Goat anti-Rabbit IgG (H+L) (STJS000856) at 1:10000 dilution. Lysates/proteins: 25 Mu g per lane. Blocking buffer: 3% nonfat dry milk in TBST. Detection: ECL Basic Kit Exposure time: 10s.



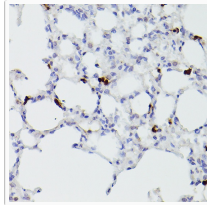
Western blot analysis of various lysates using S100A9 Rabbit pAb (STJ111884) at 1:1000 dilution incubated overnight at 4 °C. Secondary antibody: HRP-conjugated Goat anti-Rabbit IgG (H+L) (STJS000856) at 1:10000 dilution. Lysates/proteins: 25 Mu g per lane. Blocking buffer: 3% nonfat dry milk in TBST. Detection: ECL Basic Kit Negative control (NC) : Jurkat Exposure time: 90s.



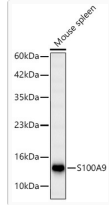
Immunohistochemistry analysis of paraffin-embedded Rat spleen tissue using S100A9 Rabbit pAb (STJ111884) at a dilution of 1:100 (40x lens). High pressure antigen retrieval was performed with 0. 01 M citrate buffer (pH 6. 0) prior to immunohistochemistry staining.



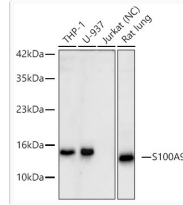
Immunohistochemistry analysis of paraffin-embedded Human colon carcinoma tissue using S100A9 Rabbit pAb (STJ111884) at a dilution of 1:100 (40x lens). High pressure antigen retrieval was performed with 0. 01 M citrate buffer (pH 6. 0) prior to immunohistochemistry staining.



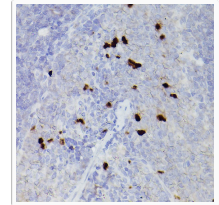
Immunohistochemistry analysis of paraffin-embedded Mouse lung tissue using S100A9 Rabbit pAb (STJ111884) at a dilution of 1:100 (40x lens). High pressure antigen retrieval was performed with 0. 01 M citrate buffer (pH 6. 0) prior to immunohistochemistry staining.



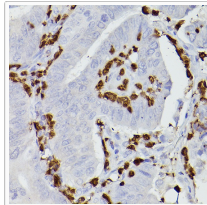
Western blot analysis of lysates from Mouse spleen using S100A9 Rabbit pAb (STJ111884) at 1:1000 dilution incubated overnight at 4C. Secondary antibody: HRP-conjugated Goat anti-Rabbit IgG (H+L) (STJS000856) at 1:10000 dilution. Lysates/proteins: 25 Mu g per lane. Blocking buffer: 3% nonfat dry milk in TBST. Detection: ECL Basic Kit Exposure time: 10s.



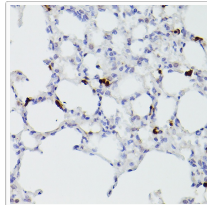
Western blot analysis of various lysates using S100A9 Rabbit pAb (STJ111884) at 1:1000 dilution incubated overnight at 4C. Secondary antibody: HRP-conjugated Goat anti-Rabbit IgG (H+L) (STJS000856) at 1:10000 dilution. Lysates/proteins: 25 Mu g per lane. Blocking buffer: 3% nonfat dry milk in TBST. Detection: ECL Basic Kit Negative control (NC) : Jurkat Exposure time: 90s.



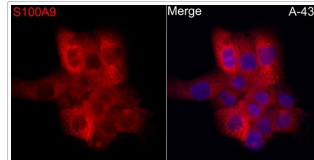
Immunohistochemistry analysis of paraffin-embedded Rat spleen tissue using S100A9 Rabbit pAb (STJ111884) at a dilution of 1:100 (40x lens). High pressure antigen retrieval was performed with 0. 01 M citrate buffer (pH 6. 0) prior to immunohistochemistry staining.



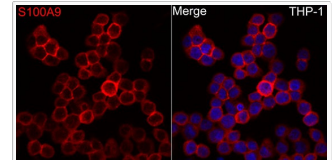
Immunohistochemistry analysis of paraffin-embedded Human colon carcinoma tissue using S100A9 Rabbit pAb (STJ111884) at a dilution of 1:100 (40x lens). High pressure antigen retrieval was performed with 0. 01 M citrate buffer (pH 6. 0) prior to immunohistochemistry staining.



Immunohistochemistry analysis of paraffin-embedded Mouse lung tissue using S100A9 Rabbit pAb (STJ111884) at a dilution of 1:100 (40x lens). High pressure antigen retrieval was performed with 0. 01 M citrate buffer (pH 6. 0) prior to immunohistochemistry staining.



Immunofluorescence analysis of A-431 cells using S100A9 Rabbit pAb (STJ111884) at dilution of 1:100 (40x lens). Secondary antibody: Cy3-conjugated Goat anti-Rabbit IgG (H+L) (STJS001166) at 1:500 dilution. Blue: DAPI for nuclear staining.



Immunofluorescence analysis of THP-1 cells using S100A9 Rabbit pAb (STJ111884) at dilution of 1:100 (40x lens). Secondary antibody: Cy3-conjugated Goat anti-Rabbit IgG (H+L) (STJS001166) at 1:500 dilution. Blue: DAPI for nuclear staining.