

Anti-RPE65 antibody (274-533) (STJ111883)

GENERAL INFORMATION

Product Type	Primary antibodies
Applications	WB/IF/ICC/ELISA
Host / Source	Rabbit
Reactivity	Human/Mouse/Rat

PRODUCT PROPERTIES

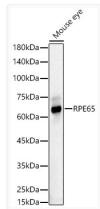
Clonality	Polyclonal
Concentration	Lot specific
Conjugation	Unconjugated
Purification	Affinity purification
Dilution Range	WB:1:1000-1:5000 IF/CC:1:50-1:200 ELISA:Recommended starting concentration is 1 Mu g/mL. Please optimize the concentration based on your specific assay requirements.
Formulation	PBS with 0.05% Proclin300, 50% Glycerol, pH7.3.
Isotype	IgG
Molecular Weight	Protein Mw: 61kDa Observed Mw: 65kDa
Storage Instruction	Store at -20°C for up to 1 year from the date of receipt, and avoid repeat freeze-thaw cycles.

TARGET INFORMATION

Gene ID	6121
Gene Symbol	RPE65
UniProt ID	RPE65_HUMAN
Immunogen Region	274-533
Immunogen Sequence	NYMDCFESNETMGVWLHIAD KKRKKYLNNKYRTSPFNLFH HINTYEDNGFLIVDLCCWKG FEFVYNYLYLANLRENWEEV KKNARKAPQPEVRRYVLPIN IDKADTGKNLVTLPNNTATA ILCSDETIWLEPEVLFSGPR QAFEFQINYYQKYCGKPYTY AYGLGLNHFVPDRCLKLNVK TKETWWWQEPDSYPSEPIFV SHPDALEEDDGVLVSVVWSP GAGQKPAYLLILNAKDLSE
Specificity	Recombinant fusion protein containing a sequence corresponding to amino acids 274-533 of human RPE65 (NP_000320.1).

ADDITIONAL INFORMATION

Note **STRICTLY FOR FURTHER SCIENTIFIC RESEARCH USE ONLY (RUO). MUST NOT TO BE USED IN DIAGNOSTIC OR THERAPEUTIC APPLICATIONS.**



Western blot analysis of lysates from Mouse eye, using RPE65 Rabbit pAb (STJ111883) at 1:3000 dilution.

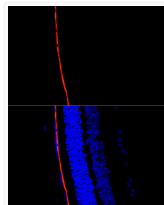
Secondary antibody: HRP-conjugated Goat anti-Rabbit IgG (H+L) (STJS000856) at 1:10000 dilution.

Lysates/proteins: 25 Mu g per lane.

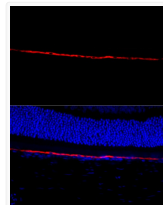
Blocking buffer: 3% nonfat dry milk in TBST.

Detection: ECL Basic Kit

Exposure time: 30s.



Perform microwave antigen retrieval with 10 mM citrate buffer pH 6. 0 before commencing with IF staining protocol. Immunofluorescence analysis of paraffin-embedded mouse retina using RPE65 Rabbit pAb (STJ111883) at dilution of 1:300 (40x lens). Secondary antibody: Cy3-conjugated Goat anti-Rabbit IgG (H+L) (STJS001166) at 1:500 dilution. Blue: DAPI for nuclear staining.



Perform microwave antigen retrieval with 10 mM citrate buffer pH 6. 0 before commencing with IF staining protocol. Immunofluorescence analysis of paraffin-embedded rat retina using RPE65 Rabbit pAb (STJ111883) at dilution of 1:300 (40x lens). Secondary antibody: Cy3-conjugated Goat anti-Rabbit IgG (H+L) (STJS001166) at 1:500 dilution. Blue: DAPI for nuclear staining.