

Anti-EPS15 antibody (660-840) (STJ111856)

GENERAL INFORMATION

Product Type	Primary antibodies
Applications	WB/IF/ICC/ELISA
Host / Source	Rabbit
Reactivity	Human/Mouse/Rat

PRODUCT PROPERTIES

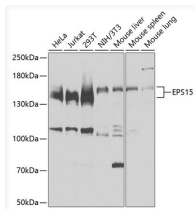
Clonality	Polyclonal
Concentration	Lot specific
Conjugation	Unconjugated
Purification	Affinity purification
Dilution Range	WB:1:500-1:2000 IF/CC:1:50-1:200 ELISA:Recommended starting concentration is 1 Mu g/mL. Please optimize the concentration based on your specific assay requirements.
Formulation	PBS with 0.02% Sodium Azide, 50% Glycerol, pH 7.3.
Isotype	IgG
Molecular Weight	Protein Mw: 99kDa Observed Mw: 150kDa
Storage Instruction	Store at -20°C for up to 1 year from the date of receipt, and avoid repeat freeze-thaw cycles.

TARGET INFORMATION

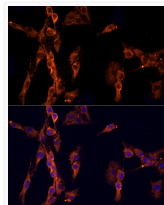
Gene ID	2060
Gene Symbol	EPS15
UniProt ID	EPS15_HUMAN
Immunogen Region	660-840
Immunogen Sequence	RQSTDPFATSSTDPFSAANN SSITSVETLKHNDPFAPGGT VVAASDSATDPFASVFGNES FGGGFADFSTLSKVNNEDPF RSATSSSVSNVITKNVFEE TSVKSEDEPPALPPKIGTPT RPCPLPPGKRSINKLDSPDP FKLNDPFQPFPGNDSPKEKD PEIFCDPFTSATTTTNKEAD P
Specificity	Recombinant fusion protein containing a sequence corresponding to amino acids 660-840 of human EPS15 (NP_001972.1).

ADDITIONAL INFORMATION

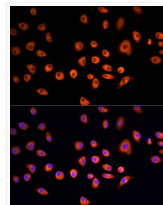
Note **STRICTLY FOR FURTHER SCIENTIFIC RESEARCH USE ONLY (RUO). MUST NOT TO BE USED IN DIAGNOSTIC OR THERAPEUTIC APPLICATIONS.**



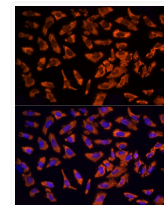
Western blot analysis of various lysates using EPS15 Rabbit pAb (STJ111856) at 1:3000 dilution. Secondary antibody: HRP-conjugated Goat anti-Rabbit IgG (H+L) (STJS000856) at 1:10000 dilution. Lysates/proteins: 25 Mu g per lane. Blocking buffer: 3% nonfat dry milk in TBST. Detection: ECL Basic Kit. Exposure time: 15s.



Immunofluorescence analysis of C6 cells using EPS15 Rabbit pAb (STJ111856) at dilution of 1:200 (40x lens). Secondary antibody: Cy3-conjugated Goat anti-Rabbit IgG (H+L) (STJS001166) at 1:500 dilution. Blue: DAPI for nuclear staining.



Immunofluorescence analysis of L929 cells using EPS15 Rabbit pAb (STJ111856) at dilution of 1:200 (40x lens). Secondary antibody: Cy3-conjugated Goat anti-Rabbit IgG (H+L) (STJS001166) at 1:500 dilution. Blue: DAPI for nuclear staining.



Immunofluorescence analysis of U2OS cells using EPS15 Rabbit pAb (STJ111856) at dilution of 1:200 (40x lens). Secondary antibody: Cy3-conjugated Goat anti-Rabbit IgG (H+L) (STJS001166) at 1:500 dilution. Blue: DAPI for nuclear staining.