

Anti-ADCY2 antibody (430-600) (STJ111847)

GENERAL INFORMATION

Product Type	Primary antibodies
Applications	WB/ELISA
Host / Source	Rabbit
Reactivity	Human/Mouse/Rat

PRODUCT PROPERTIES

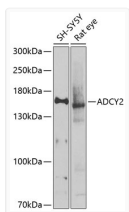
Clonality	Polyclonal
Concentration	Lot specific
Conjugation	Unconjugated
Purification	Affinity purification
Dilution Range	WB:1:500-1:2000 ELISA:Recommended starting concentration is 1 µg/mL. Please optimize the concentration based on your specific assay requirements.
Formulation	PBS with 0.02% Sodium Azide, 50% Glycerol, pH 7.3.
Isotype	IgG
Molecular Weight	Protein Mw: 124kDa Observed Mw: 150kDa
Storage Instruction	Store at -20°C for up to 1 year from the date of receipt, and avoid repeat freeze-thaw cycles.

TARGET INFORMATION

Gene ID	108
Gene Symbol	ADCY2
UniProt ID	ADCY2_HUMAN
Immunogen Region	430-600
Immunogen Sequence	VTLEHLNGAYKVEEGDGDIR DPYLKQHLVKTYFVINPKGE RRSQHLFRPRHTLDGAKMR ASVRMTRYLESWGAAKPFAH LHRDSMTTENGKISTTDVP MGQHNFNQRTLRTKSKQKRF EEELNERMIQAIDGINAQKQ WLKSEDIQRISLLFYNKVLE KEYRATALPAF
Specificity	Recombinant fusion protein containing a sequence corresponding to amino acids 430-600 of human ADCY2 (NP_065433.2).

ADDITIONAL INFORMATION

Note STRICTLY FOR FURTHER SCIENTIFIC RESEARCH USE ONLY (RUO). MUST NOT TO BE USED IN DIAGNOSTIC OR THERAPEUTIC APPLICATIONS.



Western blot analysis of various lysates using ADCY2 Rabbit pAb (STJ111847) at 1:1000 dilution.

Secondary antibody: HRP-conjugated Goat anti-Rabbit IgG (H+L) (STJS000856) at 1:10000 dilution.

Lysates/proteins: 25 µg per lane.

Blocking buffer: 3% nonfat dry milk in TBST.

Detection: ECL Basic Kit

Exposure time: 90s.