

Anti-FER antibody (200-450) (STJ111789)

GENERAL INFORMATION

Product Type	Primary antibodies
Applications	WB/ELISA
Host / Source	Rabbit
Reactivity	Human/Mouse/Rat

PRODUCT PROPERTIES

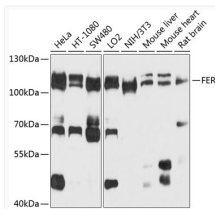
Clonality	Polyclonal
Concentration	Lot specific
Conjugation	Unconjugated
Purification	Affinity purification
Dilution Range	WB:1:500-1:2000 ELISA:Recommended starting concentration is 1 µg/mL. Please optimize the concentration based on your specific assay requirements.
Formulation	PBS with 0.02% Sodium Azide, 50% Glycerol, pH 7.3.
Isotype	IgG
Molecular Weight	Protein Mw: 95kDa Observed Mw: 110kDa
Storage Instruction	Store at -20°C for up to 1 year from the date of receipt, and avoid repeat freeze-thaw cycles.

TARGET INFORMATION

Gene ID	2241
Gene Symbol	FER
UniProt ID	FER_HUMAN
Immunogen Region	200-450
Immunogen Sequence	YDITLPLLLDLSLQKMQEEMI KALKGIFDEYSQITSLVTEE IVNVHKEIQMSVEQIDPSTE YNNFIDVHRTTAAKEQEIF DTSLLLEENLQANEIMWNN LTAEQLVMLKTLAEELMQT QQMLLNKEEAVLELEKRIEE SSETCEKSDIVLLLSQKQA LEELKQSVQQLRCTEAKFSA QKELLEQKVQENDGKPPPV VNYEEDARSVTSMERKERLS KFSIRHSIAGIIRSPKSA
Specificity	Recombinant fusion protein containing a sequence corresponding to amino acids 200-450 of human FER (NP_005237.2).

ADDITIONAL INFORMATION

Note **STRICTLY FOR FURTHER SCIENTIFIC RESEARCH USE ONLY (RUO). MUST NOT TO BE USED IN DIAGNOSTIC OR THERAPEUTIC APPLICATIONS.**



Western blot analysis of various lysates using FER Rabbit pAb (STJ111789) at 1:1000 dilution. Secondary antibody: HRP-conjugated Goat anti-Rabbit IgG (H+L) (STJS000856) at 1:10000 dilution. Lysates/proteins: 25 µg per lane. Blocking buffer: 3% nonfat dry milk in TBST. Detection: ECL Basic Kit Exposure time: 10s.