

Anti-SYCP3 antibody (1-236) (STJ111740)

GENERAL INFORMATION

Product Type	Primary antibodies
Applications	WB/ELISA
Host / Source	Rabbit
Reactivity	Mouse/Rat

PRODUCT PROPERTIES

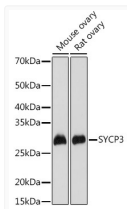
Clonality	Polyclonal
Concentration	Lot specific
Conjugation	Unconjugated
Purification	Affinity purification
Dilution Range	WB:1:500-1:1000 ELISA:Recommended starting concentration is 1 μ g/mL. Please optimize the concentration based on your specific assay requirements.
Formulation	PBS with 0.01% Thimerosal, 50% Glycerol, pH 7.3.
Isotype	IgG
Molecular Weight	Protein Mw: 28kDa Observed Mw: 28kDa
Storage Instruction	Store at -20°C for up to 1 year from the date of receipt, and avoid repeat freeze-thaw cycles.

TARGET INFORMATION

Gene ID	50511
Gene Symbol	SYCP3
UniProt ID	SYCP3_HUMAN
Immunogen Region	1-236
Immunogen Sequence	MVSSGKKYSRKSGKPSVEDQ FTRAYDFETEDKKDLSGSEE DVIEGKTAVIEKRRKRSSA GVVEDMGGEVQNMLEGVGVD INKALLAKRKRLMYTKASL KTSNQKIEHVWKTQQDQRQK LNQEYSQQFLTLFQQWDLDM QKAEEQEEKILNMFRRQQKI LQQSRIVQSQRLKTIKQLYE QFIKSMEELEKNHDNLLTGA QNEFKKEMAMLQKKIMMETQ QQEIASVRKSLQSMFL
Specificity	Recombinant fusion protein containing a sequence corresponding to amino acids 1-236 of human SYCP3 (NP_710161.1).

ADDITIONAL INFORMATION

Note **STRICTLY FOR FURTHER SCIENTIFIC RESEARCH USE ONLY (RUO). MUST NOT TO BE USED IN DIAGNOSTIC OR THERAPEUTIC APPLICATIONS.**



Western blot analysis of various lysates using SYCP3 Rabbit pAb (STJ111740) at 1:1000 dilution.

Secondary antibody: HRP-conjugated Goat anti-Rabbit IgG (H+L) (STJS000856) at 1:10000 dilution.

Lysates/proteins: 25 μ g per lane.

Blocking buffer: 3% nonfat dry milk in TBST.

Detection: ECL Basic Kit

Exposure time: 30s.