

## Anti-PHLPP1 antibody (1160-1428) (STJ111739)

### GENERAL INFORMATION

|               |                       |
|---------------|-----------------------|
| Product Type  | Primary antibodies    |
| Applications  | WB/IHC-P/IF/ICC/ELISA |
| Host / Source | Rabbit                |
| Reactivity    | Human/Mouse/Rat       |

### PRODUCT PROPERTIES

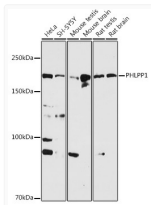
|                     |  |
|---------------------|--|
| Clonality           | Polyclonal   |
| Concentration       | Lot specific   |
| Conjugation         | Unconjugated   |
| Purification        | Affinity purification  |
| Dilution Range      | WB:1:500-1:1000<br>IHC-P:1:50-1:200<br>IF/CC:1:50-1:200<br>ELISA:Recommended starting concentration is 1 µg/mL. Please optimize the concentration based on your specific assay requirements. |
| Formulation         | PBS with 0.02% Sodium Azide, 50% Glycerol, pH7.3.  |
| Isotype             | IgG  |
| Molecular Weight    | Protein Mw: 185kDa<br>Observed Mw: 185kDa  |
| Storage Instruction | Store at -20°C for up to 1 year from the date of receipt, and avoid repeat freeze-thaw cycles.   |

### TARGET INFORMATION

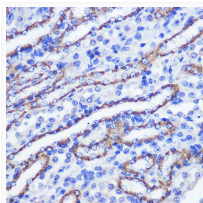
|                    |   |
|--------------------|---|
| Gene ID            | <a href="#">23239</a>   |
| Gene Symbol        | <a href="#">PHLPP1</a>  |
| UniProt ID         | <a href="#">PHLP1_HUMAN</a>   |
| Immunogen Region   | 1160-1428   |
| Immunogen Sequence | DQPSTGDASGAPAVWSHGTY EASGVKNKLCVAALSVNNFC DNREALYGVFDGDRNVEVPY<br>LLQCTMSDILAEELQKTKNE EYMYVNTFIVMQRKLGTAQ KLGGA AVLCHIKHDPVDPGG<br>SFTLTSANVGKQTVLCRNG KPLPLSRYSYIMSCHEELKRI KQHKAIITEDGKVNQVTEST<br>RILGYTFLHPSVVPRPHVQS VLLTPQDEFFILGSKGLWDS LSVEEAVEAVRNVPDALAA |
| Specificity        | Recombinant fusion protein containing a sequence corresponding to amino acids 1160-1428 of human PHLPP1 (NP_919431.2).  |

### ADDITIONAL INFORMATION

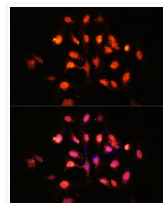
Note STRICTLY FOR FURTHER SCIENTIFIC RESEARCH USE ONLY (RUO). MUST NOT TO BE USED IN DIAGNOSTIC OR THERAPEUTIC APPLICATIONS.



Western blot analysis of various lysates using PHLPP1 Rabbit pAb (STJ111739) at 1:1000 dilution.  
Secondary antibody: HRP-conjugated Goat anti-Rabbit IgG (H+L) (STJS000856) at 1:10000 dilution.  
Lysates/proteins: 25 µg per lane.  
Blocking buffer: 3% nonfat dry milk in TBST.  
Detection: ECL Basic Kit  
Exposure time: 30s.



Immunohistochemistry analysis of paraffin-embedded Mouse kidney using PHLPP1 Rabbit pAb (STJ111739) at dilution of 1:100 (40x lens).  
Microwave antigen retrieval performed with 0.01M PBS Buffer (pH 7.2) prior to immunohistochemistry staining.



Immunofluorescence analysis of U-2 OS cells using PHLPP1 Rabbit pAb (STJ111739) at dilution of 1:100 (40x lens). Secondary antibody: Cy3-conjugated Goat anti-Rabbit IgG (H+L) (STJS001166) at 1:500 dilution. Blue: DAPI for nuclear staining.