

Anti-LSR antibody (50-240) (STJ111665)

GENERAL INFORMATION

Product Type	Primary antibodies
Applications	WB/ELISA
Host / Source	Rabbit
Reactivity	Human/Mouse/Rat

PRODUCT PROPERTIES

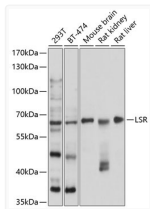
Clonality	Polyclonal
Concentration	Lot specific
Conjugation	Unconjugated
Purification	Affinity purification
Dilution Range	WB:1:500-1:2000 ELISA:Recommended starting concentration is 1 Mu g/mL. Please optimize the concentration based on your specific assay requirements.
Formulation	PBS with 0.02% Sodium Azide, 50% Glycerol, pH 7.3.
Isotype	IgG
Molecular Weight	Protein Mw: 71kDa Observed Mw: 60kDa
Storage Instruction	Store at -20°C for up to 1 year from the date of receipt, and avoid repeat freeze-thaw cycles.

TARGET INFORMATION

Gene ID	51599
Gene Symbol	LSR
UniProt ID	LSR_HUMAN
Immunogen Region	50-240
Immunogen Sequence	ALLAGGLSRGLGSHPAAGR DAVVFWLLSTWCTAPARA IQVTVSNPYHVVLFPVTL PCTYQMTSTPTQPIVIWKYK SFCRDRIADAFSPASVDNQL NAQLAAGNPGYNPYVECDSD VRTVRVVKQGNVAVTLGDY YQGRRITITGNADLTFDQTA WGDSGVYYCSVSAQDLQGN NEAYAEILVLD
Specificity	Recombinant fusion protein containing a sequence corresponding to amino acids 50-240 of human LSR (NP_057009.3).

ADDITIONAL INFORMATION

Note STRICTLY FOR FURTHER SCIENTIFIC RESEARCH USE ONLY (RUO). MUST NOT TO BE USED IN DIAGNOSTIC OR THERAPEUTIC APPLICATIONS.



Western blot analysis of various lysates using LSR Rabbit pAb (STJ111665) at 1:1000 dilution.

Secondary antibody: HRP-conjugated Goat anti-Rabbit IgG (H+L) (STJS000856) at 1:10000 dilution.

Lysates/proteins: 25 Mu g per lane.

Blocking buffer: 3% nonfat dry milk in TBST.

Detection: ECL Basic Kit

Exposure time: 10s.