

## Anti-SMS antibody (1-366) (STJ111588)

### GENERAL INFORMATION

Product Type	Primary antibodies
Applications	WB/ELISA
Host / Source	Rabbit
Reactivity	Human/Mouse

### PRODUCT PROPERTIES

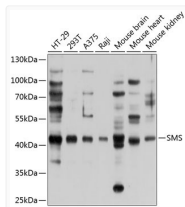
Clonality	Polyclonal
Concentration	Lot specific
Conjugation	Unconjugated
Purification	Affinity purification
Dilution Range	WB:1:500-1:2000 ELISA:Recommended starting concentration is 1 µg/mL. Please optimize the concentration based on your specific assay requirements.
Formulation	PBS with 0.01% Thimerosal, 50% Glycerol, pH 7.3.
Isotype	IgG
Molecular Weight	Protein Mw: 41kDa Observed Mw: 41kDa
Storage Instruction	Store at -20°C for up to 1 year from the date of receipt, and avoid repeat freeze-thaw cycles.

### TARGET INFORMATION

Gene ID	<a href="#">6611</a>
Gene Symbol	<a href="#">SMS</a>
UniProt ID	<a href="#">SPSY_HUMAN</a>
Immunogen Region	1-366
Immunogen Sequence	MAAARHSTLDFMLGAKADGE TILKGLQSFQEQGMAESVH TWQDHGYLATYTNKNGSFAN LRIYPHGLVLLDLSYDGDGDA QGKEEIDSILNKVEERMKEL SQDSTGRVKRLPPIVRGGAI DRYWPTADGRLVEYDIDEVV YDEDSPYQNIKILHSKQFGN ILILSGDVNLAESDLAYTRA IMGSGKEDYTGKDVILILGGG DGGILCEIVKLPKMTMVE IDQMVIDGCKKYMRTCTGD
Specificity	Recombinant fusion protein containing a sequence corresponding to amino acids 1-366 of human SMS (NP_004586.2).

### ADDITIONAL INFORMATION

Note **STRICTLY FOR FURTHER SCIENTIFIC RESEARCH USE ONLY (RUO). MUST NOT TO BE USED IN DIAGNOSTIC OR THERAPEUTIC APPLICATIONS.**



Western blot analysis of various lysates using SMS Rabbit pAb (STJ111588) at 1:1000 dilution.  
 Secondary antibody: HRP-conjugated Goat anti-Rabbit IgG (H+L) (STJS000856) at 1:10000 dilution.  
 Lysates/proteins: 25 µg per lane.  
 Blocking buffer: 3% nonfat dry milk in TBST.  
 Detection: ECL Basic Kit  
 Exposure time: 5s.