

Anti-EBNA1BP2 antibody (1-306) (STJ111587)

GENERAL INFORMATION

Product Type	Primary antibodies
Applications	WB/IF/ICC/ELISA
Host / Source	Rabbit
Reactivity	Human/Mouse/Rat

PRODUCT PROPERTIES

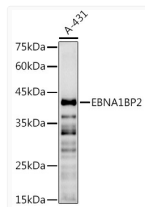
Clonality	Polyclonal
Concentration	Lot specific
Conjugation	Unconjugated
Purification	Affinity purification
Dilution Range	WB:1:1000-1:2000 IF/CC:1:50-1:200 ELISA:Recommended starting concentration is 1 Mu g/mL. Please optimize the concentration based on your specific assay requirements.
Formulation	PBS with 0.02% Sodium Azide, 50% Glycerol, pH 7.3.
Isotype	IgG
Molecular Weight	Protein Mw: 35kDa Observed Mw: 40kDa
Storage Instruction	Store at -20°C for up to 1 year from the date of receipt, and avoid repeat freeze-thaw cycles.

TARGET INFORMATION

Gene ID	10969
Gene Symbol	EBNA1BP2
UniProt ID	EBP2_HUMAN
Immunogen Region	1-306
Immunogen Sequence	MDTPPLSDSESESDSLVTD RELQDAFSRGLLKPLNVVL EGPKKAVNDVNLKQCLAEF KRDLEWVERLDVTLGPVPEI GGSEAPAPQNKDQKAVDPED DFQREMSFYRQAQAAVLAVL PRLHQLKYPTKRPTDYFAEM AKSDLQMQKIRQKLQTKQAA MERSEKAKQLRALRKYGKKV QTEVLQKRQKEKAHMMNAIK KYQKGFSDKLDLFLEGDQKPL AQRKKAGAKGQQMRKGP
Specificity	Recombinant fusion protein containing a sequence corresponding to amino acids 1-306 of human EBNA1BP2 (NP_006815.2).

ADDITIONAL INFORMATION

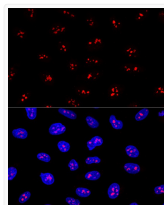
Note STRICTLY FOR FURTHER SCIENTIFIC RESEARCH USE ONLY (RUO). MUST NOT TO BE USED IN DIAGNOSTIC OR THERAPEUTIC APPLICATIONS.



Western blot analysis of lysates from A-431 cells, using EBNA1BP2 Rabbit pAb (STJ111587) at 1:1000 dilution.

Secondary antibody: HRP-conjugated Goat anti-Rabbit IgG (H+L) (STJS000856) at 1:10000 dilution.

Lysates/proteins: 25 Mu g per lane.
Blocking buffer: 3% nonfat dry milk in TBST.
Detection: ECL Basic Kit
Exposure time: 30s.



Confocal immunofluorescence analysis of U2OS cells using EBNA1BP2 Rabbit pAb (STJ111587) at dilution of 1:200. Blue: DAPI for nuclear staining.