

## Anti-EPB41L2 antibody (1-210) (STJ111566)

### GENERAL INFORMATION

Product Type	Primary antibodies
Applications	WB/IF/ICC/ELISA
Host / Source	Rabbit
Reactivity	Human

### PRODUCT PROPERTIES

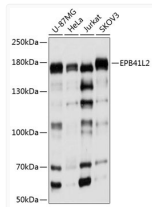
Clonality	Polyclonal
Concentration	Lot specific
Conjugation	Unconjugated
Purification	Affinity purification
Dilution Range	WB:1:200-1:2000 IF/CC:1:50-1:200 ELISA:Recommended starting concentration is 1 Mu g/mL. Please optimize the concentration based on your specific assay requirements.
Formulation	PBS with 0.01% Thimerosal, 50% Glycerol, pH 7.3.
Isotype	IgG
Molecular Weight	Protein Mw: 113kDa Observed Mw: 180kDa
Storage Instruction	Store at -20°C for up to 1 year from the date of receipt, and avoid repeat freeze-thaw cycles.

### TARGET INFORMATION

Gene ID	<a href="#">2037</a>
Gene Symbol	<a href="#">EPB41L2</a>
UniProt ID	<a href="#">E41L2_HUMAN</a>
Immunogen Region	1-210
Immunogen Sequence	MTTEVGSVSEVKKDSSQLGT DATKEKPKEVAENQQNQSSD PEEKGSQPPPAESQSSLR RQKREKETSESRGISRFIPP WLKKQKSYTLVVAKDGGDKK EPTQAVVEEQVLDKEEPLPE EQRQAKGDAEEMAQKKQEIK VEVKEEKPSVSKEEKPSVSK VEMQPTELVSKEREKVKET QEDKLEGGAAKRETKEVQTN ELKAEKASQK
Specificity	Recombinant fusion protein containing a sequence corresponding to amino acids 1-210 of human EPB41L2 (NP_001186317.1).

### ADDITIONAL INFORMATION

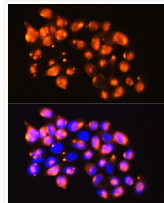
Note **STRICTLY FOR FURTHER SCIENTIFIC RESEARCH USE ONLY (RUO). MUST NOT TO BE USED IN DIAGNOSTIC OR THERAPEUTIC APPLICATIONS.**



Western blot analysis of various lysates using EPB41L2 Rabbit pAb (STJ111566) at 1:1000 dilution.

Secondary antibody: HRP-conjugated Goat anti-Rabbit IgG (H+L) (STJS000856) at 1:10000 dilution.

Lysates/proteins: 25 Mu g per lane.  
 Blocking buffer: 3% nonfat dry milk in TBST.  
 Detection: ECL Basic Kit  
 Exposure time: 5s.



Immunofluorescence analysis of HeLa cells using EPB41L2 Rabbit pAb (STJ111566) at dilution of 1:100. Blue: DAPI for nuclear staining.