

Anti-GCDH antibody (149-438) (STJ111546)

GENERAL INFORMATION

Product Type	Primary antibodies
Applications	WB/IHC-P/ELISA
Host / Source	Rabbit
Reactivity	Human/Mouse/Rat

PRODUCT PROPERTIES

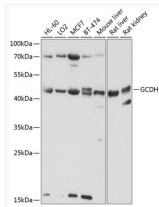
Clonality	Polyclonal
Concentration	Lot specific
Conjugation	Unconjugated
Purification	Affinity purification
Dilution Range	WB:1:200-1:2000 IHC-P:1:50-1:200 ELISA:Recommended starting concentration is 1 Mu g/mL. Please optimize the concentration based on your specific assay requirements.
Formulation	PBS with 0.02% Sodium Azide, 50% Glycerol, pH 7.3.
Isotype	IgG
Molecular Weight	Protein Mw: 48kDa Observed Mw: 48kDa
Storage Instruction	Store at -20°C for up to 1 year from the date of receipt, and avoid repeat freeze-thaw cycles.

TARGET INFORMATION

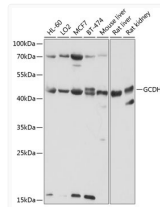
Gene ID	2639
Gene Symbol	GCDH
UniProt ID	GCDH_HUMAN
Immunogen Region	149-438
Immunogen Sequence	MHPIYAYGSEEQRQKYLPLQL AKGELLGCFGLTEPNSGSDP SSMETRAHYNSSNKSYTLNG TKTWITNSPMADLFVWVWARC EDGCIRGFLEKGMRGLSAP RIQGFSLRASATGMIMDG VEVPEENVLPGASSLGGPFG CLNNARYGIAWGVLGASEFC LHTARQYALDRMQFGVPLAR NQLIQKKLADMLTEITLGLH ACLQLGRLKDDKAAPEMVS LLKRNNCGKALDIARQARD
Specificity	Recombinant fusion protein containing a sequence corresponding to amino acids 149-438 of human GCDH (NP_000150.1).

ADDITIONAL INFORMATION

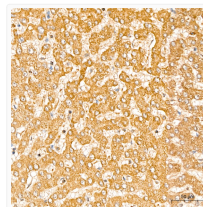
Note STRICTLY FOR FURTHER SCIENTIFIC RESEARCH USE ONLY (RUO). MUST NOT TO BE USED IN DIAGNOSTIC OR THERAPEUTIC APPLICATIONS.



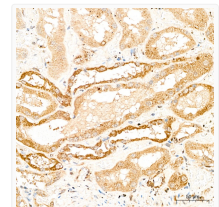
Western blot analysis of various lysates using GCDH Rabbit pAb (STJ111546) at 1:1000 dilution.
Secondary antibody: HRP-conjugated Goat anti-Rabbit IgG (H+L) (STJS000856) at 1:10000 dilution.
Lysates/proteins: 25 Mu g per lane.
Blocking buffer: 3% nonfat dry milk in TBST.
Detection: ECL Basic Kit
Exposure time: 30s.



Western blot analysis of various lysates using GCDH Rabbit pAb (STJ111546) at 1:1000 dilution.
Secondary antibody: HRP-conjugated Goat anti-Rabbit IgG (H+L) (STJS000856) at 1:10000 dilution.
Lysates/proteins: 25 Mu g per lane.
Blocking buffer: 3% nonfat dry milk in TBST.
Detection: ECL Basic Kit
Exposure time: 30s.



Immunohistochemistry analysis of paraffin-embedded Human liver tissue using GCDH Rabbit pAb (STJ111546) at a dilution of 1:200 (40x lens).
High pressure antigen retrieval performed with 0.01M Citrate Bufferr (pH 6.0) prior to immunohistochemistry staining.



Immunohistochemistry analysis of paraffin-embedded Human kidney tissue using GCDH Rabbit pAb (STJ111546) at a dilution of 1:200 (40x lens).
High pressure antigen retrieval performed with 0.01M Citrate Bufferr (pH 6.0) prior to immunohistochemistry staining.