

Anti-MGEA5 antibody (380-580) (STJ111534)

GENERAL INFORMATION

Product Type	Primary antibodies
Applications	WB/IHC-P/ELISA
Host / Source	Rabbit
Reactivity	Human/Mouse/Rat

PRODUCT PROPERTIES

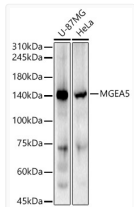
Clonality	Polyclonal
Concentration	Lot specific
Conjugation	Unconjugated
Purification	Affinity purification
Dilution Range	WB:1:500-1:1000 IHC-P:1:50-1:200 ELISA:Recommended starting concentration is 1 µg/mL. Please optimize the concentration based on your specific assay requirements.
Formulation	PBS with 0.05% Proclin300, 50% Glycerol, pH 7.3.
Isotype	IgG
Molecular Weight	Protein Mw: 103kDa Observed Mw: 130kDa
Storage Instruction	Store at -20°C for up to 1 year from the date of receipt, and avoid repeat freeze-thaw cycles.

TARGET INFORMATION

Gene ID	10724
Gene Symbol	OGA
UniProt ID	OGA_HUMAN
Immunogen Region	380-580
Immunogen Sequence	YQEPIMSQGAALSGEPTTLT KEEKKQPDEEPMVMVEKQ EETDHKNDNQILSEIVEAKM AEELKPMDDKESIAESKSP EMSMQEDCISDIAPMOTDEQ TNKEQFVPGPNEKPLYTAEP VTLEDLQLLADLFYLPYEHG PKGAQMLREFQWLRANSSVV SVNCKGKDKSEKIEEWSRAA KFEEMCGLVMGMFTRLSNCA N
Specificity	Recombinant fusion protein containing a sequence corresponding to amino acids 380-580 of human MGEA5 (NP_001135906.1).

ADDITIONAL INFORMATION

Note STRICTLY FOR FURTHER SCIENTIFIC RESEARCH USE ONLY (RUO). MUST NOT TO BE USED IN DIAGNOSTIC OR THERAPEUTIC APPLICATIONS.



Western blot analysis of various lysates, using MGEA5 Rabbit pAb (STJ111534) at 1:600 dilution.

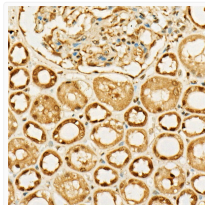
Secondary antibody: HRP-conjugated Goat anti-Rabbit IgG (H+L) (STJS000856) at 1:10000 dilution.

Lysates/proteins: 25 µg per lane.

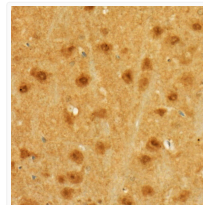
Blocking buffer: 3% nonfat dry milk in TBST.

Detection: ECL Basic Kit

Exposure time: 180s.



Immunohistochemistry analysis of paraffin-embedded Human kidney using MGEA5 Rabbit pAb (STJ111534) at dilution of 1:50 (40x lens). High pressure antigen retrieval performed with 0.01M Citrate Bufferr (pH 6.0) prior to immunohistochemistry staining.



Immunohistochemistry analysis of paraffin-embedded Rat brain using MGEA5 Rabbit pAb (STJ111534) at dilution of 1:50 (40x lens). High pressure antigen retrieval performed with 0.01M Citrate Bufferr (pH 6.0) prior to immunohistochemistry staining.