

Anti-SIRPA antibody (220-504) (STJ111516)

GENERAL INFORMATION

Product Type	Primary antibodies
Applications	WB/IF/ICC/ELISA
Host / Source	Rabbit
Reactivity	Human/Mouse/Rat

PRODUCT PROPERTIES

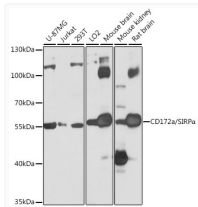
Clonality	Polyclonal
Concentration	Lot specific
Conjugation	Unconjugated
Purification	Affinity purification
Dilution Range	WB:1:500-1:2000 IF/CC:1:50-1:200 ELISA:Recommended starting concentration is 1 μ g/mL. Please optimize the concentration based on your specific assay requirements.
Formulation	PBS with 0.02% Sodium Azide, 50% Glycerol, pH7.3.
Isotype	IgG
Molecular Weight	Protein Mw: 55kDa Observed Mw: 65kDa
Storage Instruction	Store at -20°C for up to 1 year from the date of receipt, and avoid repeat freeze-thaw cycles.

TARGET INFORMATION

Gene ID	140885
Gene Symbol	SIRPA
UniProt ID	SHPS1_HUMAN
Immunogen Region	220-504
Immunogen Sequence	EDVHSQVICEVAHVTLQGDP LRG TANLSETIRVPPTLEV T QQPVRAENQVNVTCQVRK FY PQRLQLTWLENGNVSRTETA STVTENKDGTYNWMSWLLVN VSAHRDDVKLTCQVEHDGQP AVSKSHDLKVS AHPKEQGSN TAAENTGSNERNIYIV
Specificity	Recombinant fusion protein containing a sequence corresponding to amino acids 220-375 of human CD172a/SIRP Alpha (NP_542970.1).

ADDITIONAL INFORMATION

Note **STRICTLY FOR FURTHER SCIENTIFIC RESEARCH USE ONLY (RUO). MUST NOT TO BE USED IN DIAGNOSTIC OR THERAPEUTIC APPLICATIONS.**



Western blot analysis of various lysates using CD172a/SIRP Alpha Rabbit pAb (STJ111516) at 1:1000 dilution.

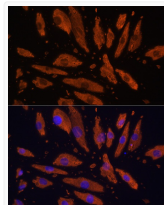
Secondary antibody: HRP-conjugated Goat anti-Rabbit IgG (H+L) (STJS000856) at 1:10000 dilution.

Lysates/proteins: 25 μ g per lane.

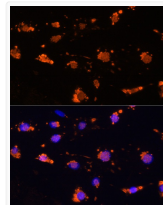
Blocking buffer: 3% nonfat dry milk in TBST.

Detection: ECL Basic Kit

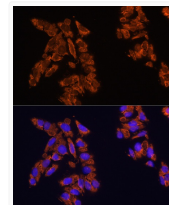
Exposure time: 1s.



Immunofluorescence analysis of H9C2 cells using CD172a/SIRP Alpha Rabbit pAb (STJ111516) at dilution of 1:100 (40x lens). Blue: DAPI for nuclear staining.



Immunofluorescence analysis of L929 cells using CD172a/SIRP Alpha Rabbit pAb (STJ111516) at dilution of 1:100 (40x lens). Blue: DAPI for nuclear staining.



Immunofluorescence analysis of U2OS cells using CD172a/SIRP Alpha Rabbit pAb (STJ111516) at dilution of 1:100 (40x lens). Blue: DAPI for nuclear staining.