

Anti-SCFD1 antibody (373-642) (STJ111440)

GENERAL INFORMATION

Product Type	Primary antibodies
Applications	WB/IHC-P/ELISA
Host / Source	Rabbit
Reactivity	Human/Mouse/Rat

PRODUCT PROPERTIES

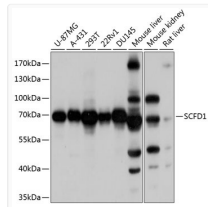
Clonality	Polyclonal
Concentration	Lot specific
Conjugation	Unconjugated
Purification	Affinity purification
Dilution Range	WB:1:500-1:2000 IHC-P:1:50-1:200 ELISA:Recommended starting concentration is 1 µg/mL. Please optimize the concentration based on your specific assay requirements.
Formulation	PBS with 0.02% Sodium Azide, 50% Glycerol, pH 7.3.
Isotype	IgG
Molecular Weight	Protein Mw: 72kDa Observed Mw: 72kDa
Storage Instruction	Store at -20°C for up to 1 year from the date of receipt, and avoid repeat freeze-thaw cycles.

TARGET INFORMATION

Gene ID	23256
Gene Symbol	SCFD1
UniProt ID	SCFD1_HUMAN
Immunogen Region	373-642
Immunogen Sequence	SMLSNTAKLTSVSSLPEL LEKKRLIDLHTNVAVLEH IKARKLDVYFEYEEKIMSKT TLDKSLLDIISDPDAGTPED KMRLFLIYYISTQQAPSEAD LEQYKKALTDAGCNLNPQY IKQWKAFTKMASAPASYGST TTKPMGLLSRVMTGSGQFVM EGVKNLVLKQQLNPVTRILD NLMEMKSNPETDDYRYFDPK MLRGNDSSVPRKNPQEAIVFVVGGGNYIEYQNLVDYI
Specificity	Recombinant fusion protein containing a sequence corresponding to amino acids 373-642 of human SCFD1 (NP_057190.2).

ADDITIONAL INFORMATION

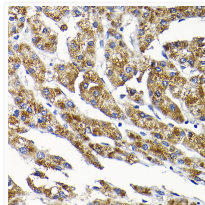
Note STRICTLY FOR FURTHER SCIENTIFIC RESEARCH USE ONLY (RUO). MUST NOT TO BE USED IN DIAGNOSTIC OR THERAPEUTIC APPLICATIONS.



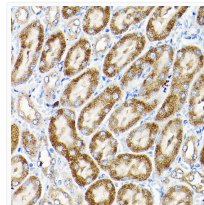
Western blot analysis of various lysates using SCFD1 Rabbit pAb (STJ111440) at 1:1000 dilution.

Secondary antibody: HRP-conjugated Goat anti-Rabbit IgG (H+L) (STJS000856) at 1:10000 dilution.

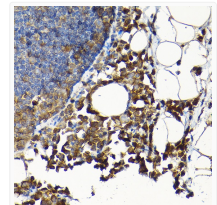
Lysates/proteins: 25 µg per lane.
Blocking buffer: 3% nonfat dry milk in TBST.
Detection: ECL Basic Kit
Exposure time: 1s.



Immunohistochemistry analysis of paraffin-embedded Human liver cancer using SCFD1 Rabbit pAb (STJ111440) at dilution of 1:200 (40x lens). High pressure antigen retrieval performed with 0.01M Citrate Buffer (pH 6.0) prior to immunohistochemistry staining.



Immunohistochemistry analysis of paraffin-embedded Mouse kidney using SCFD1 Rabbit pAb (STJ111440) at dilution of 1:200 (40x lens). High pressure antigen retrieval performed with 0.01M Citrate Buffer (pH 6.0) prior to immunohistochemistry staining.



Immunohistochemistry analysis of paraffin-embedded Rat lung using SCFD1 Rabbit pAb (STJ111440) at dilution of 1:200 (40x lens). High pressure antigen retrieval performed with 0.01M Citrate Buffer (pH 6.0) prior to immunohistochemistry staining.