

## Anti-SEPT9 antibody (1-110) (STJ111369)

### GENERAL INFORMATION

Product Type	Primary antibodies
Applications	WB/IF/ICC/ELISA
Host / Source	Rabbit
Reactivity	Human/Mouse/Rat

### PRODUCT PROPERTIES

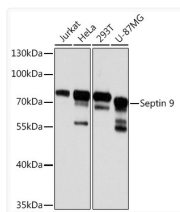
Clonality	Polyclonal
Concentration	Lot specific
Conjugation	Unconjugated
Purification	Affinity purification
Dilution Range	WB:1:500-1:2000 IF/CC:1:50-1:200 ELISA:Recommended starting concentration is 1 Mu g/mL. Please optimize the concentration based on your specific assay requirements.
Formulation	PBS with 0.02% Sodium Azide, 50% Glycerol, pH 7.3.
Isotype	IgG
Molecular Weight	Protein Mw: 65kDa Observed Mw: 75kDa
Storage Instruction	Store at -20°C for up to 1 year from the date of receipt, and avoid repeat freeze-thaw cycles.

### TARGET INFORMATION

Gene ID	<a href="#">10801</a>
Gene Symbol	<a href="#">SEPTIN9</a>
UniProt ID	<a href="#">SEPT9_HUMAN</a>
Immunogen Region	1-110
Immunogen Sequence	MEPPASKVPEVPTAPATDAA PKRVEIQMPKPAEAPTAPSP AQTLENSEPAVSQLQSRLE PKPQPPVAEATPRSQEATEA APSCVGDMDATPRDAGLKQA PASRNEKAPV
Specificity	Recombinant fusion protein containing a sequence corresponding to amino acids 1-110 of human Septin 9 (NP_001106964.1).

### ADDITIONAL INFORMATION

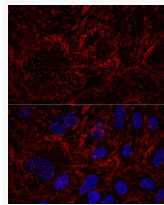
Note STRICTLY FOR FURTHER SCIENTIFIC RESEARCH USE ONLY (RUO). MUST NOT TO BE USED IN DIAGNOSTIC OR THERAPEUTIC APPLICATIONS.



Western blot analysis of various lysates using Septin 9 Rabbit pAb (STJ111369) at 1:3000 dilution.

Secondary antibody: HRP-conjugated Goat anti-Rabbit IgG (H+L) (STJS000856) at 1:10000 dilution.

Lysates/proteins: 25 Mu g per lane.  
Blocking buffer: 3% nonfat dry milk in TBST.  
Detection: ECL Basic Kit  
Exposure time: 5s.



Confocal immunofluorescence analysis of U2OS cells using Septin 9 Rabbit pAb (STJ111369) at dilution of 1:100. Blue: DAPI for nuclear staining.