

## Anti-GMFB antibody (1-140) (STJ111365)

### GENERAL INFORMATION

Product Type	Primary antibodies
Applications	WB/IF/ICC/ELISA
Host / Source	Rabbit
Reactivity	Human/Mouse/Rat

### PRODUCT PROPERTIES

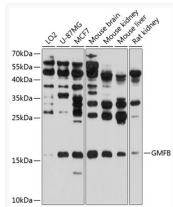
Clonality	Polyclonal
Concentration	Lot specific
Conjugation	Unconjugated
Purification	Affinity purification
Dilution Range	WB:1:200-1:2000 IF/CC:1:50-1:200 ELISA:Recommended starting concentration is 1 Mu g/mL. Please optimize the concentration based on your specific assay requirements.
Formulation	PBS with 0.02% Sodium Azide, 50% Glycerol, pH 7.3.
Isotype	IgG
Molecular Weight	Protein Mw: 17kDa Observed Mw: 17kDa
Storage Instruction	Store at -20°C for up to 1 year from the date of receipt, and avoid repeat freeze-thaw cycles.

### TARGET INFORMATION

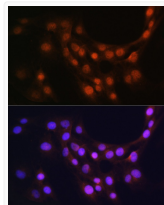
Gene ID	<a href="#">2764</a>
Gene Symbol	<a href="#">GMFB</a>
UniProt ID	<a href="#">GMFB_HUMAN</a>
Immunogen Region	1-140
Immunogen Sequence	MSESLVVCDAEDLVEKLRK FRFRKETNNAAIIMKIDKDK RLVVLDEELEGISPDELKDE LPERQPRFIVYSYKYQHDDG RVSYP LCFIFSSPVGCKPEQ QMMYAGSKNKLVTAE LTKV FEIRNTEDLTEEWLREKLG F
Specificity	Recombinant fusion protein containing a sequence corresponding to amino acids 1-140 of human GMFB (NP_004115.1).

### ADDITIONAL INFORMATION

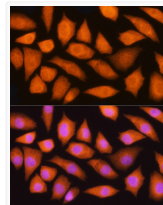
Note **STRICTLY FOR FURTHER SCIENTIFIC RESEARCH USE ONLY (RUO). MUST NOT TO BE USED IN DIAGNOSTIC OR THERAPEUTIC APPLICATIONS.**



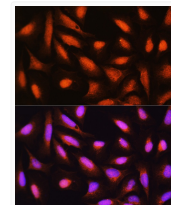
Western blot analysis of various lysates using GMFB Rabbit pAb (STJ111365) at 1:1000 dilution.  
Secondary antibody: HRP-conjugated Goat anti-Rabbit IgG (H+L) (STJS000856) at 1:10000 dilution.  
Lysates/proteins: 25 Mu g per lane.  
Blocking buffer: 3% nonfat dry milk in TBST.  
Detection: ECL Basic Kit  
Exposure time: 30s.



Immunofluorescence analysis of C6 cells using GMFB Rabbit pAb (STJ111365) at dilution of 1:100 (40x lens). Secondary antibody: Cy3-conjugated Goat anti-Rabbit IgG (H+L) (STJS001166) at 1:500 dilution. Blue: DAPI for nuclear staining.



Immunofluorescence analysis of L929 cells using GMFB Rabbit pAb (STJ111365) at dilution of 1:100 (40x lens). Secondary antibody: Cy3-conjugated Goat anti-Rabbit IgG (H+L) (STJS001166) at 1:500 dilution. Blue: DAPI for nuclear staining.



Immunofluorescence analysis of U-2 OS cells using GMFB Rabbit pAb (STJ111365) at dilution of 1:100 (40x lens). Secondary antibody: Cy3-conjugated Goat anti-Rabbit IgG (H+L) (STJS001166) at 1:500 dilution. Blue: DAPI for nuclear staining.