

Anti-ALDH7A1 antibody (430-539) (STJ111351)

GENERAL INFORMATION

Product Type	Primary antibodies
Applications	WB/IHC-P/IF/ICC/ELISA
Host / Source	Rabbit
Reactivity	Human/Mouse/Rat

PRODUCT PROPERTIES

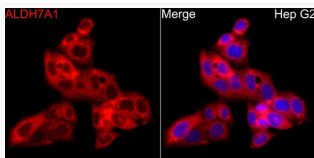
Clonality	Polyclonal
Concentration	Lot specific
Conjugation	Unconjugated
Purification	Affinity purification
Dilution Range	WB:1:100-1:500 IHC-P:1:50-1:200 IF/CC:1:50-1:200 ELISA:Recommended starting concentration is 1 μ g/mL. Please optimize the concentration based on your specific assay requirements.
Formulation	PBS with 0.02% Sodium Azide, 50% Glycerol, pH 7.3.
Isotype	IgG
Molecular Weight	Protein Mw: 58kDa Observed Mw: 58kDa
Storage Instruction	Store at -20°C for up to 1 year from the date of receipt, and avoid repeat freeze-thaw cycles.

TARGET INFORMATION

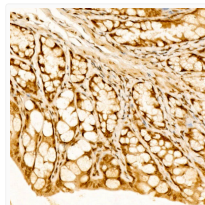
Gene ID	501
Gene Symbol	ALDH7A1
UniProt ID	AL7A1_HUMAN
Immunogen Region	430-539
Immunogen Sequence	APILYVFKFKNEEEVFAWNN EVKQGLSSSIFTKDLGRIFR WLGPKGSDCGIVNVNPTSG AEIGGAFGGEKHTGGGREGS SDAWKQYMRRSTCTINYSKD LPLAQGIKFK
Specificity	Recombinant fusion protein containing a sequence corresponding to amino acids 430-539 of human ALDH7A1 (NP_001173.2).

ADDITIONAL INFORMATION

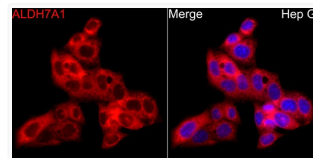
Note **STRICTLY FOR FURTHER SCIENTIFIC RESEARCH USE ONLY (RUO). MUST NOT TO BE USED IN DIAGNOSTIC OR THERAPEUTIC APPLICATIONS.**



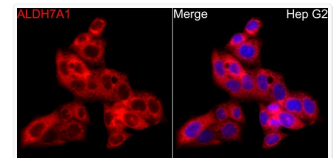
Western blot analysis of various lysates, using ALDH7A1 Rabbit pAb (STJ111351) at 1:400 dilution.
Secondary antibody: HRP-conjugated Goat anti-Rabbit IgG (H+L) (STJS000856) at 1:10000 dilution.
Lysates/proteins: 25 μ g per lane.
Blocking buffer: 3% nonfat dry milk in TBST.
Detection: ECL Enhanced Kit
Negative control (NC) : K-562.
Exposure time: 75s.



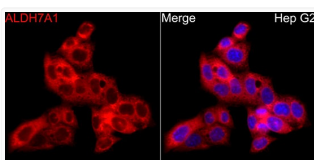
Immunohistochemistry analysis of paraffin-embedded Human kidney tissue using ALDH7A1 Rabbit pAb (STJ111351) at a dilution of 1:50 (40x lens). High pressure antigen retrieval performed with 0.01M Citrate Buffer (pH 6.0) prior to immunohistochemistry staining.



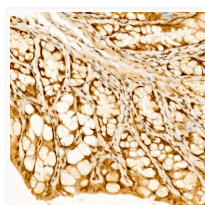
Western blot analysis of various lysates, using ALDH7A1 Rabbit pAb (STJ111351) at 1:400 dilution.
Secondary antibody: HRP Goat Anti-Rabbit IgG (H+L) (STJS000856) at 1:10000 dilution.
Lysates/proteins: 25 μ g per lane.
Blocking buffer: 3% nonfat dry milk in TBST.
Detection: ECL Enhanced Kit
Negative control (NC) : K-562.
Exposure time: 75s.



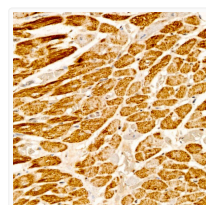
Immunohistochemistry analysis of ALDH7A1 in paraffin-embedded human kidney tissue using ALDH7A1 Rabbit pAb (STJ111351) at a dilution of 1:50 (40x lens). High pressure antigen retrieval was performed with 0.01 M citrate buffer (pH 6.0) prior to immunohistochemistry staining.



Immunofluorescence analysis of HepG2 cells using ALDH7A1 Rabbit pAb (STJ111351) at dilution of 1:50 (40x lens). Blue: DAPI for nuclear staining.



Immunohistochemistry analysis of ALDH7A1 in paraffin-embedded mouse colon tissue using ALDH7A1 Rabbit pAb (STJ111351) at a dilution of 1:50 (40x lens). High pressure antigen retrieval was performed with 0.01 M citrate buffer (pH 6.0) prior to immunohistochemistry staining.



Immunohistochemistry analysis of ALDH7A1 in paraffin-embedded rat heart tissue using ALDH7A1 Rabbit pAb (STJ111351) at a dilution of 1:50 (40x lens). High pressure antigen retrieval was performed with 0.01 M citrate buffer (pH 6.0) prior to immunohistochemistry staining.