

Anti-CD320 antibody (36-229) (STJ111350)

GENERAL INFORMATION

| | |
|---------------|--------------------|
| Product Type | Primary antibodies |
| Applications | WB/ELISA |
| Host / Source | Rabbit |
| Reactivity | Human/Mouse |

PRODUCT PROPERTIES

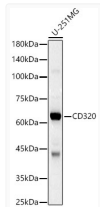
| | |
|---------------------|--|
| Clonality | Polyclonal |
| Concentration | Lot specific |
| Conjugation | Unconjugated |
| Purification | Affinity purification |
| Dilution Range | WB:1:200-1:2000 ELISA:Recommended starting concentration is 1 Mu g/mL. Please optimize the concentration based on your specific assay requirements. |
| Formulation | PBS with 0.02% Sodium Azide, 50% Glycerol, pH 7.3. |
| Isotype | IgG |
| Molecular Weight | Protein Mw: 29kDa Observed Mw: 58-70kDaa |
| Storage Instruction | Store at -20°C for up to 1 year from the date of receipt, and avoid repeat freeze-thaw cycles. |

TARGET INFORMATION

| | |
|--------------------|---|
| Gene ID | 51293 |
| Gene Symbol | CD320 |
| UniProt ID | CD320_HUMAN |
| Immunogen Region | 36-229 |
| Immunogen Sequence | SPLSTPTSAQAAGPSSGSCP PTKFQCRTSGLCVPLTWRCRDLDCSDGSDEEEECRIEPC QKGQCPPPGLPCPCTGVSD CSGGTDKLRNCSRLACLAG ELRCTLSDDCIPLTWRCRCDGH PDCPDSSDELGCGTNEILPE GDATTMGPPVTLESVTLRN ATTMGPPVTLESVPSVGNAT SSSAGDQSGSPTAY |
| Specificity | Recombinant fusion protein containing a sequence corresponding to amino acids 36-229 of human CD320 (NP_057663.1). |

ADDITIONAL INFORMATION

Note STRICTLY FOR FURTHER SCIENTIFIC RESEARCH USE ONLY (RUO). MUST NOT TO BE USED IN DIAGNOSTIC OR THERAPEUTIC APPLICATIONS.



Western blot analysis of lysates from U-251MG cells, using CD320 Rabbit pAb (STJ111350) at 1:2500 dilution.

Secondary antibody: HRP-conjugated Goat anti-Rabbit IgG (H+L) (STJS000856) at 1:10000 dilution.

Lysates/proteins: 25 Mu g per lane.

Blocking buffer: 3% nonfat dry milk in TBST.

Detection: ECL Basic Kit

Exposure time: 30s.