

## Anti-HFM1 antibody (1-240) (STJ111332)

### GENERAL INFORMATION

|               |                    |
|---------------|--------------------|
| Product Type  | Primary antibodies |
| Applications  | WB/IHC-P/ELISA     |
| Host / Source | Rabbit             |
| Reactivity    | Human/Mouse/Rat    |

### PRODUCT PROPERTIES

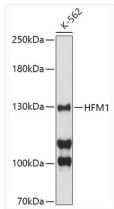
|                     |  |
|---------------------|--|
| Clonality           | Polyclonal   |
| Concentration       | Lot specific   |
| Conjugation         | Unconjugated   |
| Purification        | Affinity purification  |
| Dilution Range      | WB:1:500-1:2000<br>IHC-P:1:50-1:100<br>ELISA:Recommended starting concentration is 1 µg/mL. Please optimize the concentration based on your specific assay requirements. |
| Formulation         | PBS with 0.02% Sodium Azide, 50% Glycerol, pH 7.3.   |
| Isotype             | IgG  |
| Molecular Weight    | Protein Mw: 163kDa<br>Observed Mw: 130kDa  |
| Storage Instruction | Store at -20°C for up to 1 year from the date of receipt, and avoid repeat freeze-thaw cycles.   |

### TARGET INFORMATION

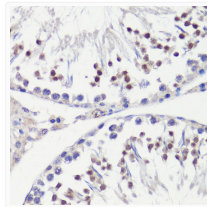
|                    |   |
|--------------------|---|
| Gene ID            | <a href="#">164045</a>  |
| Gene Symbol        | <a href="#">HFM1</a>  |
| UniProt ID         | <a href="#">HFM1_HUMAN</a>  |
| Immunogen Region   | 1-240   |
| Immunogen Sequence | MLKSNDCFLSLENLFFEKPD EVENHPDNEKSLDWFLPPAP LISEIPDTQLEEEELSHKL<br>LGQEKRPKMLTSNLKITNED TNYISLTQKFQFAFPSDKYE QDDLNLLEGVGNNDLSHVAGK<br>LTYASQKYKNHIGTEIAPEK SVPDDTKLVNFAEDKGESTS VFRKRLFKISDNIHGSAYSN<br>DNELDSHIGSVKIVQTEMNK GKSRNYSNSKQKQYSANVF TANNAFSAISEIGEGMFKAP |
| Specificity        | Recombinant fusion protein containing a sequence corresponding to amino acids 1-240 of human HFM1 (NP_001017975.4).   |

### ADDITIONAL INFORMATION

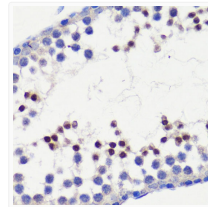
Note STRICTLY FOR FURTHER SCIENTIFIC RESEARCH USE ONLY (RUO). MUST NOT TO BE USED IN DIAGNOSTIC OR THERAPEUTIC APPLICATIONS.



Western blot analysis of lysates from K-562 cells, using HFM1 Rabbit pAb (STJ111332) at 1:500 dilution.  
Secondary antibody: HRP-conjugated Goat anti-Rabbit IgG (H+L) (STJS000856) at 1:10000 dilution.  
Lysates/proteins: 25 µg per lane.  
Blocking buffer: 3% nonfat dry milk in TBST.  
Detection: ECL Basic Kit  
Exposure time: 90s.



Immunohistochemistry analysis of paraffin-embedded Rat testis using HFM1 Rabbit pAb (STJ111332) at dilution of 1:100 (40x lens).  
Microwave antigen retrieval performed with 0.01M PBS Buffer (pH 7.2) prior to immunohistochemistry staining.



Immunohistochemistry analysis of paraffin-embedded Mouse testis using HFM1 Rabbit pAb (STJ111332) at dilution of 1:100 (40x lens).  
Microwave antigen retrieval performed with 0.01M PBS Buffer (pH 7.2) prior to immunohistochemistry staining.