

Anti-CYP46A1 antibody (24-280) (STJ111308)

GENERAL INFORMATION

Product Type	Primary antibodies
Applications	WB/IF/ICC/ELISA
Host / Source	Rabbit
Reactivity	Human/Mouse/Rat

PRODUCT PROPERTIES

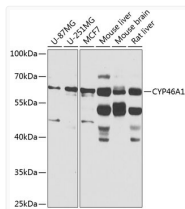
Clonality	Polyclonal
Concentration	Lot specific
Conjugation	Unconjugated
Purification	Affinity purification
Dilution Range	WB:1:500-1:2000 IF/CC:1:50-1:100 ELISA:Recommended starting concentration is 1 Mu g/mL. Please optimize the concentration based on your specific assay requirements.
Formulation	PBS with 0.02% Sodium Azide, 50% Glycerol, pH 7.3.
Isotype	IgG
Molecular Weight	Protein Mw: 57kDa Observed Mw: 57kDa
Storage Instruction	Store at -20°C for up to 1 year from the date of receipt, and avoid repeat freeze-thaw cycles.

TARGET INFORMATION

Gene ID	10858
Gene Symbol	CYP46A1
UniProt ID	CP46A_HUMAN
Immunogen Region	24-280
Immunogen Sequence	HRARSRYEHIPGPPRPSFLL GHLPCFWKKDEVGGRVLQDV FLDWAKKYGPVVRVNVFHKT SVIVTSPESVKKFLMSTKYN KDSKMYRALQTVFGERLFGQ GLVSECNYERWHKQRRVIDL AFSRSSLVSLMETFNEKAEQ LVEILEAKADGQTPVSMQDM LTYTAMDILAKAAFGMETSM LLGAQKPLSQAVKLMLEGIT ASRNTLAKFLPGKRKQLREV RESIRFLRQVGRDWWQRRR
Specificity	Recombinant fusion protein containing a sequence corresponding to amino acids 24-280 of human CYP46A1 (NP_006659.1).

ADDITIONAL INFORMATION

Note STRICTLY FOR FURTHER SCIENTIFIC RESEARCH USE ONLY (RUO). MUST NOT TO BE USED IN DIAGNOSTIC OR THERAPEUTIC APPLICATIONS.



Western blot analysis of various lysates using CYP46A1 Rabbit pAb (STJ111308) at 1:1000 dilution.

Secondary antibody: HRP-conjugated Goat anti-Rabbit IgG (H+L) (STJS000856) at 1:10000 dilution.

Lysates/proteins: 25 Mu g per lane.
Blocking buffer: 3% nonfat dry milk in TBST.
Detection: ECL Basic Kit
Exposure time: 10s.