

Anti-SART1 antibody (1-255) (STJ111304)

GENERAL INFORMATION

Product Type	Primary antibodies
Applications	WB/IHC-P/IP/ELISA
Host / Source	Rabbit
Reactivity	Human/Mouse/Rat

PRODUCT PROPERTIES

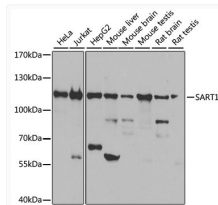
Clonality	Polyclonal
Concentration	Lot specific
Conjugation	Unconjugated
Purification	Affinity purification
Dilution Range	WB:1:500-1:2000 IHC-P:1:50-1:200 IP:0.5 Mu g-4 Mu g antibody for 200 Mu g-400 Mu g extracts of whole cells ELISA:Recommended starting concentration is 1 Mu g/mL. Please optimize the concentration based on your specific assay requirements.
Formulation	PBS with 0.02% Sodium Azide, 50% Glycerol, pH 7.3.
Isotype	IgG
Molecular Weight	Protein Mw: 90kDa Observed Mw: 120kDa
Storage Instruction	Store at -20°C for up to 1 year from the date of receipt, and avoid repeat freeze-thaw cycles.

TARGET INFORMATION

Gene ID	9092
Gene Symbol	SART1
UniProt ID	SNUT1_HUMAN
Immunogen Region	1-255
Immunogen Sequence	MGSSKKHRGEKEAAGTAAA GTGGATEQPPRHHREHKHKH RSGGSGGSGGERRKRSRERG GERGSGRRGAEAEARSSTHG RERSQAEPSEERRVKREKRDD GYEAASSKTSSGDASSLSI EETNKLRAKLGKPLEVNAI KKEAGTKKEPVTDVINPMA LRQREELREKLA-AAKEKRL NQKLGKIKITLGEDDPWLDDT AAWIERSRQLQKEKDLAEKR AKLLEEMDQEFVSTLVEE
Specificity	Recombinant fusion protein containing a sequence corresponding to amino acids 1-255 of human SART1 (NP_005137.1).

ADDITIONAL INFORMATION

Note STRICTLY FOR FURTHER SCIENTIFIC RESEARCH USE ONLY (RUO). MUST NOT TO BE USED IN DIAGNOSTIC OR THERAPEUTIC APPLICATIONS.



Western blot analysis of various lysates using SART1 Rabbit pAb (STJ111304) at 1:1000 dilution.

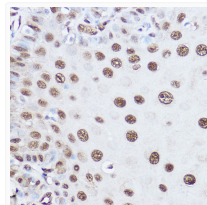
Secondary antibody: HRP-conjugated Goat anti-Rabbit IgG (H+L) (STJS000856) at 1:10000 dilution.

Lysates/proteins: 25 Mu g per lane.

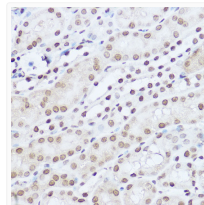
Blocking buffer: 3% nonfat dry milk in TBST.

Detection: ECL Basic Kit

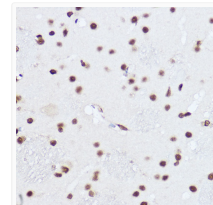
Exposure time: 10s.



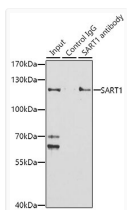
Immunohistochemistry analysis of paraffin-embedded Human esophageal using SART1 Rabbit pAb (STJ111304) at dilution of 1:100 (40x lens). High pressure antigen retrieval performed with 0.01M Citrate Bufferr (pH 6.0) prior to immunohistochemistry staining.



Immunohistochemistry analysis of paraffin-embedded Mouse kidney using SART1 Rabbit pAb (STJ111304) at dilution of 1:100 (40x lens). High pressure antigen retrieval performed with 0.01M Citrate Bufferr (pH 6.0) prior to immunohistochemistry staining.



Immunohistochemistry analysis of paraffin-embedded Rat brain using SART1 Rabbit pAb (STJ111304) at dilution of 1:100 (40x lens). High pressure antigen retrieval performed with 0.01M Citrate Bufferr (pH 6.0) prior to immunohistochemistry staining.



Immunoprecipitation analysis of 150 Mu g extracts of Jurkat cells using 3 Mu g SART1 antibody (STJ111304). Western blot was performed from the immunoprecipitate using SART1 antibody (STJ111304) at a dilution of 1:1000.