

## Anti-TRPA1 antibody (900-1000) (STJ111303)

### GENERAL INFORMATION

Product Type	Primary antibodies
Applications	WB/IHC-P/IF/ICC/ELISA
Host / Source	Rabbit
Reactivity	Human/Mouse/Rat

### PRODUCT PROPERTIES

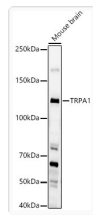
Clonality	Polyclonal
Concentration	Lot specific
Conjugation	Unconjugated
Purification	Affinity purification
Dilution Range	WB:1:500-1:1000 IHC-P:1:50-1:200 IF/CC:1:50-1:200 ELISA:Recommended starting concentration is 1 µg/mL. Please optimize the concentration based on your specific assay requirements.
Formulation	PBS with 0.02% Sodium Azide, 50% Glycerol, pH 7.3.
Isotype	IgG
Molecular Weight	Protein Mw: 128kDa Observed Mw: 128kDa
Storage Instruction	Store at -20°C for up to 1 year from the date of receipt, and avoid repeat freeze-thaw cycles.

### TARGET INFORMATION

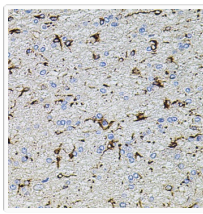
Gene ID	<a href="#">8989</a>
Gene Symbol	<a href="#">TRPA1</a>
UniProt ID	<a href="#">TRPA1_HUMAN</a>
Immunogen Region	900-1000
Immunogen Sequence	SPLLSIIQTFSMMLGDINYR ESFLEPYLRNELAHPVLSFA QLVSFTIFVPIVLMNLLIGL AVGDIAEVQKHASKRIAMQ VELHTSLEKKLPLWFLRKVD Q
Specificity	A synthetic peptide corresponding to a sequence within amino acids 900-1000 of human TRPA1 (NP_015628.2).

### ADDITIONAL INFORMATION

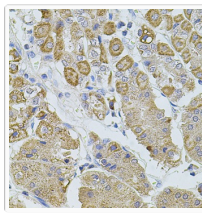
Note	STRICTLY FOR FURTHER SCIENTIFIC RESEARCH USE ONLY (RUO). MUST NOT TO BE USED IN DIAGNOSTIC OR THERAPEUTIC APPLICATIONS.
------	---



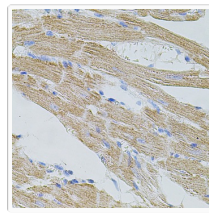
Western blot analysis of lysates from Mouse brain, using TRPA1 Rabbit pAb (STJ111303) at 1:1000 dilution.  
 Secondary antibody: HRP-conjugated Goat anti-Rabbit IgG (H+L) (STJS000856) at 1:10000 dilution.  
 Lysates/proteins: 25 Mu g per lane.  
 Blocking buffer: 3% nonfat dry milk in TBST.  
 Detection: ECL Basic Kit  
 Exposure time: 60s.



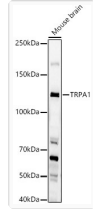
Immunohistochemistry analysis of paraffin-embedded Rat brain using TRPA1 Rabbit pAb (STJ111303) at dilution of 1:100 (40x lens).  
 Microwave antigen retrieval performed with 0.01M PBS Buffer (pH 7.2) prior to immunohistochemistry staining.



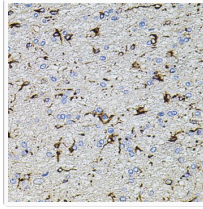
Immunohistochemistry analysis of paraffin-embedded Human stomach using TRPA1 Rabbit pAb (STJ111303) at dilution of 1:100 (40x lens).  
 Microwave antigen retrieval performed with 0.01M PBS Buffer (pH 7.2) prior to immunohistochemistry staining.



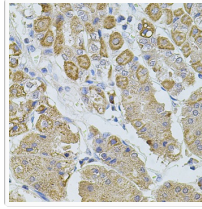
Immunohistochemistry analysis of paraffin-embedded Mouse heart using TRPA1 Rabbit pAb (STJ111303) at dilution of 1:100 (40x lens).  
 Microwave antigen retrieval performed with 0.01M PBS Buffer (pH 7.2) prior to immunohistochemistry staining.



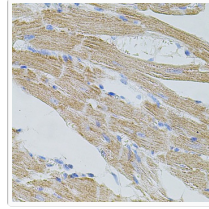
Western blot analysis of lysates from Mouse brain, using TRPA1 Rabbit pAb (STJ111303) at 1:10000 dilution.  
 Secondary antibody: HRP Goat Anti-Rabbit IgG (H+L) (STJS000856) at 1:10000 dilution.  
 Lysates/proteins: 25 Mu g per lane.  
 Blocking buffer: 3% nonfat dry milk in TBST.  
 Detection: ECL Basic Kit  
 Exposure time: 60s.



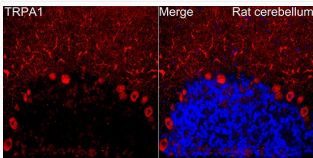
Immunohistochemistry analysis of paraffin-embedded Rat brain using TRPA1 Rabbit pAb (STJ111303) at dilution of 1:100 (40x lens).  
 Perform microwave antigen retrieval with 10 mM PBS buffer pH 7.2 before commencing with immunohistochemistry staining protocol.



Immunohistochemistry analysis of paraffin-embedded Human stomach using TRPA1 Rabbit pAb (STJ111303) at dilution of 1:100 (40x lens).  
 Perform microwave antigen retrieval with 10 mM PBS buffer pH 7.2 before commencing with immunohistochemistry staining protocol.



Immunohistochemistry analysis of paraffin-embedded Mouse heart using TRPA1 Rabbit pAb (STJ111303) at dilution of 1:100 (40x lens).  
 Perform microwave antigen retrieval with 10 mM PBS buffer pH 7.2 before commencing with immunohistochemistry staining protocol.



Immunofluorescence analysis of paraffin-embedded Rat cerebellum tissue using TRPA1 Rabbit pAb (STJ111303) at dilution of 1:200 (40x lens).  
 Secondary antibody: Cy3 Goat Anti-Rabbit IgG (H+L) (STJS001166) at 1:500 dilution. Blue: DAPI for nuclear staining. Perform microwave antigen retrieval with 0.01 M citrate buffer (pH 6.0) prior to IF staining.