

Anti-MSH4 antibody (697-936) (STJ111292)

GENERAL INFORMATION

Product Type	Primary antibodies
Applications	WB/ELISA
Host / Source	Rabbit
Reactivity	Mouse/Rat

PRODUCT PROPERTIES

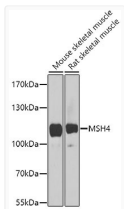
Clonality	Polyclonal
Concentration	Lot specific
Conjugation	Unconjugated
Purification	Affinity purification
Dilution Range	WB:1:500-1:2000 ELISA:Recommended starting concentration is 1 μ g/mL. Please optimize the concentration based on your specific assay requirements.
Formulation	PBS with 0.02% Sodium Azide, 50% Glycerol, pH 7.3.
Isotype	IgG
Molecular Weight	Protein Mw: 105kDa Observed Mw: 105kDa
Storage Instruction	Store at -20°C for up to 1 year from the date of receipt, and avoid repeat freeze-thaw cycles.

TARGET INFORMATION

Gene ID	4438
Gene Symbol	MSH4
UniProt ID	MSH4_HUMAN
Immunogen Region	697-936
Immunogen Sequence	QIMAQIGSYVPAEYSSFRIA KQIFTRISTDDDIETNSSTF MKEMKEIAYILHNANDKSLI LIDELGRGTNTEEGIGICYA VCEYLLSLKAFTLFATHFLE LCHIDALYPNVENMHFEVQH VKNTSRNKEAILYTKLSKG LTEEKNYGLKAAEVSSLPPS IVLDAKEITTQITRQILQNQ RSTPEMERQRAVYHLATRLV QTARNSQLDPDSLRIYLSNL KKKYKEDFPRTEQVPEKTE
Specificity	Recombinant fusion protein containing a sequence corresponding to amino acids 697-936 of human MSH4 (NP_002431.2).

ADDITIONAL INFORMATION

Note **STRICTLY FOR FURTHER SCIENTIFIC RESEARCH USE ONLY (RUO). MUST NOT TO BE USED IN DIAGNOSTIC OR THERAPEUTIC APPLICATIONS.**



Western blot analysis of various lysates using MSH4 Rabbit pAb (STJ111292) at 1:1000 dilution.
 Secondary antibody: HRP-conjugated Goat anti-Rabbit IgG (H+L) (STJS000856) at 1:10000 dilution.
 Lysates/proteins: 25 μ g per lane.
 Blocking buffer: 3% nonfat dry milk in TBST.
 Detection: ECL Enhanced Kit
 Exposure time: 90s.