

## Anti-L1CAM antibody (1143-1257) (STJ111291)

### GENERAL INFORMATION

Product Type	Primary antibodies
Applications	WB/IF/ICC/ELISA
Host / Source	Rabbit
Reactivity	Human/Mouse/Rat

### PRODUCT PROPERTIES

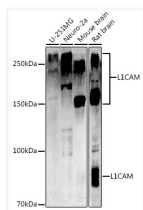
Clonality	Polyclonal
Concentration	Lot specific
Conjugation	Unconjugated
Purification	Affinity purification
Dilution Range	WB:1:500-1:1000 IF/CC:1:50-1:200 ELISA:Recommended starting concentration is 1 µg/mL. Please optimize the concentration based on your specific assay requirements.
Formulation	PBS with 0.02% Sodium Azide, 50% Glycerol, pH 7.3.
Isotype	IgG
Molecular Weight	Protein Mw: 140kDa Observed Mw: 85kDa/200-250kDa
Storage Instruction	Store at -20°C for up to 1 year from the date of receipt, and avoid repeat freeze-thaw cycles.

### TARGET INFORMATION

Gene ID	<a href="#">3897</a>
Gene Symbol	<a href="#">L1CAM</a>
UniProt ID	<a href="#">L1CAM_HUMAN</a>
Immunogen Region	1143-1257
Immunogen Sequence	IKRSKGGKYSVKDKEDTQVD SEARPMKDETFGEYRSLESD NEEKAFGSSQPSLNGDIKPL GSDDSLADYGGSDVQVFNED GSFIGQYSGKKEAAGGND SSGATSPINPAVALE
Specificity	Recombinant fusion protein containing a sequence corresponding to amino acids 1143-1257 of human CD171/L1CAM (NP_000416.1).

### ADDITIONAL INFORMATION

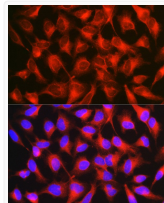
Note STRICTLY FOR FURTHER SCIENTIFIC RESEARCH USE ONLY (RUO). MUST NOT TO BE USED IN DIAGNOSTIC OR THERAPEUTIC APPLICATIONS.



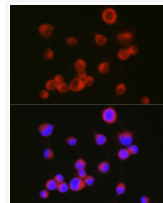
Western blot analysis of various lysates using CD171/L1CAM Rabbit pAb (STJ111291) at 1:1000 dilution.

Secondary antibody: HRP-conjugated Goat anti-Rabbit IgG (H+L) (STJS000856) at 1:10000 dilution.

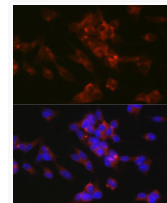
Lysates/proteins: 25 µg per lane.  
Blocking buffer: 3% nonfat dry milk in TBST.  
Detection: ECL Basic Kit  
Exposure time: 30s.



Immunofluorescence analysis of HeLa cells using CD171/L1CAM Rabbit pAb (STJ111291) at dilution of 1:100 (40x lens). Secondary antibody: Cy3-conjugated Goat anti-Rabbit IgG (H+L) (STJS001166) at 1:500 dilution. Blue: DAPI for nuclear staining.



Immunofluorescence analysis of Neuro-2a cells using CD171/L1CAM Rabbit pAb (STJ111291) at dilution of 1:100 (40x lens). Secondary antibody: Cy3-conjugated Goat anti-Rabbit IgG (H+L) (STJS001166) at 1:500 dilution. Blue: DAPI for nuclear staining.



Immunofluorescence analysis of SH-SY5Y cells using CD171/L1CAM Rabbit pAb (STJ111291) at dilution of 1:100 (40x lens). Secondary antibody: Cy3-conjugated Goat anti-Rabbit IgG (H+L) (STJS001166) at 1:500 dilution. Blue: DAPI for nuclear staining.