

Anti-AQP8 antibody (100-200) (STJ111278)

GENERAL INFORMATION

Product Type	Primary antibodies
Applications	WB/IF/ICC/ELISA
Host / Source	Rabbit
Reactivity	Human/Mouse/Rat

PRODUCT PROPERTIES

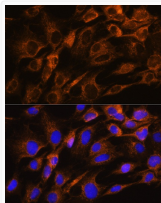
Clonality	Polyclonal
Concentration	Lot specific
Conjugation	Unconjugated
Purification	Affinity purification
Dilution Range	WB:1:1000-1:5000 IF/CC:1:50-1:200 ELISA:Recommended starting concentration is 1 Mu g/mL. Please optimize the concentration based on your specific assay requirements.
Formulation	PBS with 0.05% Proclin300, 50% Glycerol, pH7.3.
Isotype	IgG
Molecular Weight	Protein Mw: 27kDa Observed Mw: 27kDa
Storage Instruction	Store at -20°C for up to 1 year from the date of receipt, and avoid repeat freeze-thaw cycles.

TARGET INFORMATION

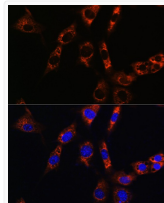
Gene ID	343
Gene Symbol	AQP8
UniProt ID	AQP8_HUMAN
Immunogen Region	100-200
Immunogen Sequence	MLIGGLNLVMLLPYWVSQLL GGMLGAALAKAVSPEERFWN ASGAAFVTVQEQGVAGALV AEIILTLLALAVCMGAIN KTKGPLAPFSIGFAVTVDIL A
Specificity	A synthetic peptide corresponding to a sequence within amino acids 100-200 of human AQP8 (NP_001160.2).

ADDITIONAL INFORMATION

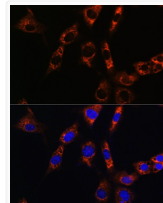
Note **STRICTLY FOR FURTHER SCIENTIFIC RESEARCH USE ONLY (RUO). MUST NOT TO BE USED IN DIAGNOSTIC OR THERAPEUTIC APPLICATIONS.**



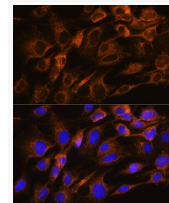
Western blot analysis of lysates from Rat liver, using AQP8 Rabbit pAb (STJ111278) at 1:3000 dilution.
Secondary antibody: HRP-conjugated Goat anti-Rabbit IgG (H+L) (STJS000856) at 1:10000 dilution.
Lysates/proteins: 25 Mu g per lane.
Blocking buffer: 3% nonfat dry milk in TBST.
Detection: ECL Basic Kit
Exposure time: 30s.



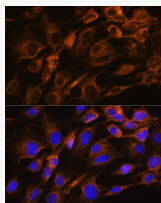
Western blot analysis of various lysates using AQP8 Rabbit pAb (STJ111278) at 1:1000 dilution.
Secondary antibody: HRP-conjugated Goat anti-Rabbit IgG (H+L) (STJS000856) at 1:10000 dilution.
Lysates/ proteins: 25 Mu g per lane.
Blocking buffer: 3 % nonfat dry milk in TBST.
Detection: ECL Basic Kit
Exposure time: 90s.



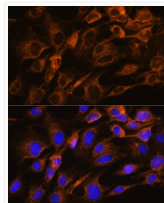
Immunofluorescence analysis of C6 cells using AQP8 Rabbit pAb (STJ111278) at dilution of 1:100. Secondary antibody: Cy3-conjugated Goat anti-Rabbit IgG (H+L) (STJS001166) at 1:500 dilution. Blue: DAPI for nuclear staining.



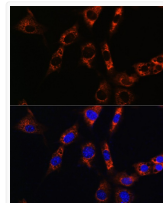
Western blot analysis of lysates from Rat liver, using AQP8 Rabbit pAb (STJ111278) at 1:3000 dilution.
Secondary antibody: HRP Goat Anti-Rabbit IgG (H+L) (STJS000856) at 1:10000 dilution.
Lysates/proteins: 25 Mu g per lane.
Blocking buffer: 3% nonfat dry milk in TBST.
Detection: ECL Basic Kit
Exposure time: 30s.



Western blot analysis of various lysates using AQP8 Rabbit pAb (STJ111278) at 1:1000 dilution.
Secondary antibody:HRP Goat Anti-Rabbit IgG (H+L) (STJS000856) at 1:10000 dilution.
Lysates/ proteins: 25 Mu g per lane.
Blocking buffer: 3 % nonfat dry milk in TBST.
Detection:ECL Basic Kit
Exposuretime: 90s.



Immunofluorescence analysis of C6 cells using AQP8 Rabbit pAb (STJ111278) at dilution of 1:100. Secondary antibody: Cy3 Goat Anti-Rabbit IgG (H+L) (STJS001166) at 1:500 dilution. Blue: DAPI for nuclear staining.



Immunofluorescence analysis of NIH/3T3 cells using AQP8 Rabbit pAb (STJ111278) at dilution of 1:100. Secondary antibody: Cy3 Goat Anti-Rabbit IgG (H+L) (STJS001166) at 1:500 dilution. Blue: DAPI for nuclear staining.