

## Anti-ACAN antibody (420-575) (STJ111277)

### GENERAL INFORMATION

Product Type	Primary antibodies
Applications	WB/IHC-P/IF/ICC/ELISA
Host / Source	Rabbit
Reactivity	Human/Mouse/Rat

### PRODUCT PROPERTIES

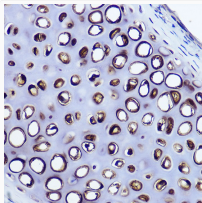
Clonality	Polyclonal
Concentration	Lot specific
Conjugation	Unconjugated
Purification	Affinity purification
Dilution Range	WB:1:500-1:1000 IHC-P:1:50-1:200 IF/CC:1:50-1:200 ELISA:Recommended starting concentration is 1 µg/mL. Please optimize the concentration based on your specific assay requirements.
Formulation	PBS with 0.09% Sodium Azide, 50% Glycerol, pH7.3.
Isotype	IgG
Molecular Weight	Protein Mw: 261kDa Observed Mw: Refer to figures
Storage Instruction	Store at -20°C for up to 1 year from the date of receipt, and avoid repeat freeze-thaw cycles.

### TARGET INFORMATION

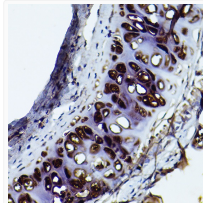
Gene ID	<a href="#">176</a>
Gene Symbol	<a href="#">ACAN</a>
UniProt ID	<a href="#">PGCA_HUMAN</a>
Immunogen Region	420-575
Immunogen Sequence	FAPEIGATAFAEVENETGEA TRPWGFPTPLGLPATAFTSE DLVVQVTAVPGQPHLPGGVV FHYRPGPTRYSLTFEEAQQQA CLRTGAVIASPEQLQAAYEA GYEQCDDAGWLRDQTVRYPIV SPRTPCVGDKDSSPGVRYTYG VRPSTETYDVYCFVDR
Specificity	Recombinant fusion protein containing a sequence corresponding to amino acids 420-575 of human Aggrecan (NP_037359.3).

### ADDITIONAL INFORMATION

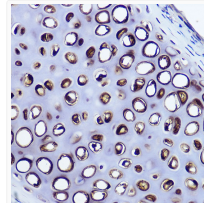
Note **STRICTLY FOR FURTHER SCIENTIFIC RESEARCH USE ONLY (RUO). MUST NOT TO BE USED IN DIAGNOSTIC OR THERAPEUTIC APPLICATIONS.**



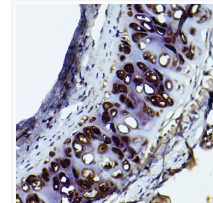
Immunohistochemistry analysis of paraffin-embedded Mouse cartilage using Aggrecan Rabbit pAb (STJ111277) at dilution of 1:50 (40x lens). High pressure antigen retrieval performed with 0.01M Citrate Buffer (pH 6.0) prior to immunohistochemistry staining.



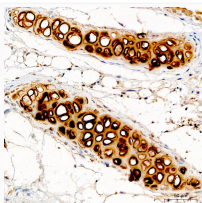
Immunohistochemistry analysis of paraffin-embedded Rat cartilage using Aggrecan Rabbit pAb (STJ111277) at dilution of 1:50 (40x lens). High pressure antigen retrieval performed with 0.01M Citrate Buffer (pH 6.0) prior to immunohistochemistry staining.



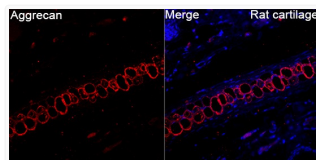
Immunohistochemistry analysis of paraffin-embedded Mouse cartilage using Aggrecan Rabbit pAb (STJ111277) at dilution of 1:50 (40x lens). High pressure antigen retrieval performed with 0.01M Citrate Buffer (pH 6.0) prior to immunohistochemistry staining.



Immunohistochemistry analysis of paraffin-embedded Rat cartilage using Aggrecan Rabbit pAb (STJ111277) at dilution of 1:50 (40x lens). High pressure antigen retrieval performed with 0.01M Citrate Buffer (pH 6.0) prior to immunohistochemistry staining.



Immunohistochemistry analysis of paraffin-embedded Human cartilage tissue using Aggrecan Rabbit pAb (STJ111277) at a dilution of 1:200 (40x lens). High pressure antigen retrieval performed with 0.01M Citrate Buffer (pH 6.0) prior to immunohistochemistry staining.



Immunofluorescence analysis of Rat cartilage tissue using Aggrecan Rabbit pAb (STJ111277) at a dilution of 1:100 (40x lens). Secondary antibody: Cy3-conjugated Goat anti-Rabbit IgG (H+L) (STJS001166) at 1:500 dilution. Blue: DAPI for nuclear staining. High pressure antigen retrieval performed with 0.01M Citrate Buffer (pH 6.0) prior to IF staining.