

Anti-ULK1 antibody (350-450) (STJ11271)

GENERAL INFORMATION

| | |
|---------------|--------------------|
| Product Type | Primary antibodies |
| Applications | WB/IF/ICC/ELISA |
| Host / Source | Rabbit |
| Reactivity | Human/Mouse/Rat |

PRODUCT PROPERTIES

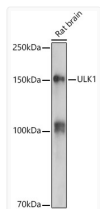
| | |
|---------------------|--|
| Clonality | Polyclonal |
| Concentration | Lot specific |
| Conjugation | Unconjugated |
| Purification | Affinity purification |
| Dilution Range | WB:1:500-1:2000 IF/CC:1:50-1:200 ELISA:Recommended starting concentration is 1 Mu g/mL. Please optimize the concentration based on your specific assay requirements. |
| Formulation | PBS with 0.05% Proclin300, 50% Glycerol, pH 7.3. |
| Isotype | IgG |
| Molecular Weight | Protein Mw: 113kDa Observed Mw: 150kDa/140kDa |
| Storage Instruction | Store at -20°C for up to 1 year from the date of receipt, and avoid repeat freeze-thaw cycles. |

TARGET INFORMATION

| | |
|--------------------|---|
| Gene ID | 8408 |
| Gene Symbol | ULK1 |
| UniProt ID | ULK1_HUMAN |
| Immunogen Region | 350-450 |
| Immunogen Sequence | SSCDTDDFVMVPAQFPGDLV AEAPSAKPPDLSMCSGSSL VASAGLESHGRTPSPSPPCS SSPSPSGRAGPFSSRCGAS VPIPVPTQVQNYQRIERNLQ S |
| Specificity | A synthetic peptide corresponding to a sequence within amino acids 350-450 of human ULK1 (NP_003556.1). |

ADDITIONAL INFORMATION

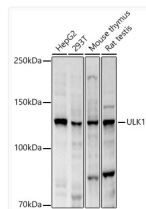
Note **STRICTLY FOR FURTHER SCIENTIFIC RESEARCH USE ONLY (RUO). MUST NOT TO BE USED IN DIAGNOSTIC OR THERAPEUTIC APPLICATIONS.**



Western blot analysis of lysates from Rat brain, using ULK1 Rabbit pAb (STJ11271) at 1:500 dilution.

Secondary antibody: HRP-conjugated Goat anti-Rabbit IgG (H+L) (STJS000856) at 1:10000 dilution.

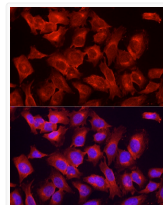
Lysates/proteins: 25 Mu g per lane.
Blocking buffer: 3% nonfat dry milk in TBST.
Detection: ECL Enhanced Kit
Exposure time: 180s.



Western blot analysis of various lysates, using ULK1 Rabbit pAb (STJ11271) at 1:2000 dilution.

Secondary antibody: HRP-conjugated Goat anti-Rabbit IgG (H+L) (STJS000856) at 1:10000 dilution.

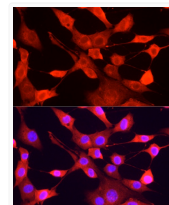
Lysates/proteins: 25 Mu g per lane.
Blocking buffer: 3% nonfat dry milk in TBST.
Detection: ECL Basic Kit
Exposure time: 10s.



Immunofluorescence analysis of HeLa cells using ULK1 Rabbit pAb (STJ11271) at dilution of 1:200 (40x lens).

Secondary antibody: Cy3-conjugated Goat anti-Rabbit IgG (H+L) (STJS001166) at 1:500 dilution.

Blue: DAPI for nuclear staining.



Immunofluorescence analysis of NIH/3T3 cells using ULK1 Rabbit pAb (STJ11271) at dilution of 1:200 (40x lens).

Secondary antibody: Cy3-conjugated Goat anti-Rabbit IgG (H+L) (STJS001166) at 1:500 dilution.

Blue: DAPI for nuclear staining.