

Anti-NAPSA antibody (321-420) (STJ111251)

GENERAL INFORMATION

Product Type	Primary antibodies
Applications	WB/IF/ICC/ELISA
Host / Source	Rabbit
Reactivity	Human/Mouse/Rat

PRODUCT PROPERTIES

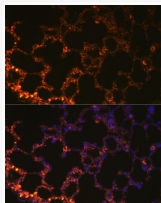
Clonality	Polyclonal
Concentration	Lot specific
Conjugation	Unconjugated
Purification	Affinity purification
Dilution Range	WB:1:100-1:500 IF/CC:1:50-1:200 ELISA:Recommended starting concentration is 1 µg/mL. Please optimize the concentration based on your specific assay requirements.
Formulation	PBS with 0.02% Sodium Azide, 50% Glycerol, pH 7.3.
Isotype	IgG
Molecular Weight	Protein Mw: 45kDa Observed Mw: 38kDa
Storage Instruction	Store at -20°C for up to 1 year from the date of receipt, and avoid repeat freeze-thaw cycles.

TARGET INFORMATION

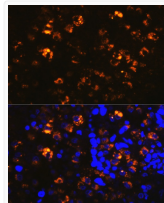
Gene ID	9476
Gene Symbol	NAPSA
UniProt ID	NAPSA_HUMAN
Immunogen Region	321-420
Immunogen Sequence	PKLPAVSFLLGGVWFNLTAH DYVIQTTRNGVRLCLSGFQA LDVPPPAGPFWILGDVFLGT YVAVFDRGDMKSSARVGLAR ARTRGADLGWGETAQAQFPG
Specificity	A synthetic peptide corresponding to a sequence within amino acids 321-420 of human NAPSA (NP_004842.1).

ADDITIONAL INFORMATION

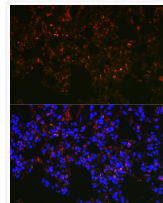
Note STRICTLY FOR FURTHER SCIENTIFIC RESEARCH USE ONLY (RUO). MUST NOT TO BE USED IN DIAGNOSTIC OR THERAPEUTIC APPLICATIONS.



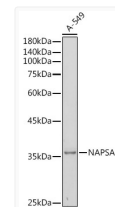
Immunofluorescence analysis of mouse lung cells using NAPSA Rabbit polyclonal antibody (STJ111251) at dilution of 1:100 (40x lens). Blue: DAPI for nuclear staining.



Immunofluorescence analysis of human lung cancer cells using NAPSA Rabbit polyclonal antibody (STJ111251) at dilution of 1:100 (40x lens). Blue: DAPI for nuclear staining.



Immunofluorescence analysis of rat lung cells using NAPSA Rabbit polyclonal antibody (STJ111251) at dilution of 1:100 (40x lens). Blue: DAPI for nuclear staining.



Western blot analysis of extracts of A-549 cells, using NAPSA antibody (STJ111251) at 1:500 dilution. Secondary antibody: HRP Goat Anti-Rabbit IgG (H+L) (STJS000856) at 1:10000 dilution. Lysates/proteins: 25 µg per lane. Blocking buffer: 3% nonfat dry milk in TBST. Detection: ECL Basic Kit. Exposure time: 180s.