

## Anti-RPL23 antibody (1-140) (STJ111217)

### GENERAL INFORMATION

Product Type	Primary antibodies
Applications	WB/IHC-P/IF/ICC/ELISA
Host / Source	Rabbit
Reactivity	Human/Mouse/Rat

### PRODUCT PROPERTIES

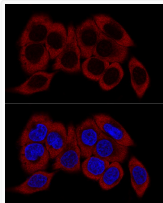
Clonality	Polyclonal
Concentration	Lot specific
Conjugation	Unconjugated
Purification	Affinity purification
Dilution Range	WB:1:500-1:4000 IHC-P:1:50-1:200 IF/ICC:1:50-1:200 ELISA:Recommended starting concentration is 1 $\mu$ g/mL. Please optimize the concentration based on your specific assay requirements.
Formulation	PBS with 0.02% Sodium Azide, 50% Glycerol, pH 7.3.
Isotype	IgG
Molecular Weight	Protein Mw: 15kDa Observed Mw: 15kDa
Storage Instruction	Store at -20°C for up to 1 year from the date of receipt, and avoid repeat freeze-thaw cycles.

### TARGET INFORMATION

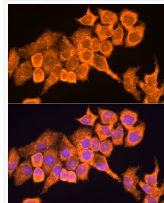
Gene ID	<a href="#">9349</a>
Gene Symbol	<a href="#">RPL23</a>
UniProt ID	<a href="#">RL23_HUMAN</a>
Immunogen Region	1-140
Immunogen Sequence	MSKRGFRGGSSGAKFRISLGL PVGAVINCADNTGAKNLYII SVKGIGKRLNRLPAAGVGD VMATVKKGKPELRKKVHPAV VIRQRKSYRRKDGVFLYFED NAGVIVNNKGMKGSAITGP VAKECADLWPRIASNAGSIA
Specificity	Recombinant fusion protein containing a sequence corresponding to amino acids 1-140 of human RPL23 (NP_000969.1).

### ADDITIONAL INFORMATION

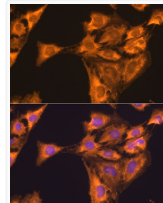
Note **STRICTLY FOR FURTHER SCIENTIFIC RESEARCH USE ONLY (RUO). MUST NOT TO BE USED IN DIAGNOSTIC OR THERAPEUTIC APPLICATIONS.**



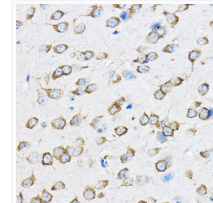
Confocal immunofluorescence analysis of HeLa cells using RPL23 Polyclonal Antibody (STJ111217) at dilution of 1:200. Blue: DAPI for nuclear staining.



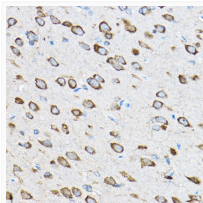
Immunofluorescence analysis of HeLa cells using RPL23 antibody (STJ111217) at dilution of 1:100. Blue: DAPI for nuclear staining.



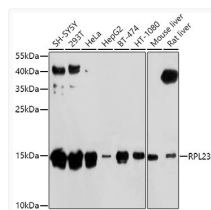
Immunofluorescence analysis of C6 cells using RPL23 antibody (STJ111217) at dilution of 1:100. Blue: DAPI for nuclear staining.



Immunohistochemistry analysis of paraffin-embedded mouse brain using RPL23 Rabbit polyclonal antibody (STJ111217) at dilution of 1:100 (40x lens). Perform high pressure antigen retrieval with 10 mM citrate buffer pH 6.0 before commencing with immunohistochemistry staining protocol.



Immunohistochemistry analysis of paraffin-embedded rat brain using RPL23 Rabbit polyclonal antibody (STJ111217) at dilution of 1:100 (40x lens). Perform high pressure antigen retrieval with 10 mM citrate buffer pH 6.0 before commencing with immunohistochemistry staining protocol.



Western blot analysis of extracts of various cell lines, using RPL23 antibody (STJ111217) at 1:1000 dilution. Secondary antibody: HRP Goat Anti-Rabbit IgG (H+L) (STJS000856) at 1:10000 dilution. Lysates/proteins: 25  $\mu$ g per lane. Blocking buffer: 3% nonfat dry milk in TBST. Detection: ECL Basic Kit. Exposure time: 5s.