

Anti-PTHLH antibody (25-175) (STJ111173)

GENERAL INFORMATION

Product Type	Primary antibodies
Applications	WB/ELISA
Host / Source	Rabbit
Reactivity	Human/Mouse

PRODUCT PROPERTIES

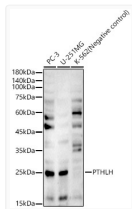
Clonality	Polyclonal
Concentration	Lot specific
Conjugation	Unconjugated
Purification	Affinity purification
Dilution Range	WB:1:2000-1:9000 ELISA:Recommended starting concentration is 1 μ g/mL. Please optimize the concentration based on your specific assay requirements.
Formulation	PBS with 0.02% Sodium Azide, 50% Glycerol, pH 7.3.
Isotype	IgG
Molecular Weight	Protein Mw: 20kDa Observed Mw: 20kDa
Storage Instruction	Store at -20°C for up to 1 year from the date of receipt, and avoid repeat freeze-thaw cycles.

TARGET INFORMATION

Gene ID	5744
Gene Symbol	PTHLH
UniProt ID	PTHR_HUMAN
Immunogen Region	25-175
Immunogen Sequence	GRSVEGLSRRLKRAVSEHQL LHDKGKSIQDLRRRFFLHHL IAEIHTAEIRATSEVSPNSK PSPNTKNHPVRFSGSDDEGRY LTQETNKVETYKEQPLKTPG KKKKGKPGKRKEQEKKRRRT RSAWLDSGVTGSGLEGDHLS DTSTTSLELDSR
Specificity	Recombinant fusion protein containing a sequence corresponding to amino acids 25-175 of human PTHLH (NP_945316.1).

ADDITIONAL INFORMATION

Note STRICTLY FOR FURTHER SCIENTIFIC RESEARCH USE ONLY (RUO). MUST NOT TO BE USED IN DIAGNOSTIC OR THERAPEUTIC APPLICATIONS.



Western blot analysis of various lysates, using PTHLH Rabbit polyclonal antibody (STJ111173) at 1:8000 dilution. Secondary antibody: HRP Goat Anti-Rabbit IgG (H+L) (STJS000856) at 1:10000 dilution. Lysates/proteins: 25 μ g per lane. Blocking buffer: 3% nonfat dry milk in TBST. Detection: ECL Basic Kit. Exposure time: 90s.