

## Anti-EXT2 antibody (80-340) (STJ111122)

### GENERAL INFORMATION

Product Type	Primary antibodies
Applications	WB/IF/ICC/ELISA
Host / Source	Rabbit
Reactivity	Human/Mouse/Rat

### PRODUCT PROPERTIES

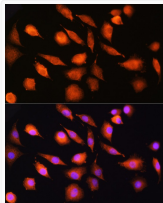
Clonality	Polyclonal
Concentration	Lot specific
Conjugation	Unconjugated
Purification	Affinity purification
Dilution Range	WB:1:500-1:2000 IF/CC:1:50-1:200 ELISA:Recommended starting concentration is 1 Mu g/mL. Please optimize the concentration based on your specific assay requirements.
Formulation	PBS with 0.02% Sodium Azide, 50% Glycerol, pH 7.3.
Isotype	IgG
Molecular Weight	Protein Mw: 82kDa Observed Mw: 82kDa
Storage Instruction	Store at -20°C for up to 1 year from the date of receipt, and avoid repeat freeze-thaw cycles.

### TARGET INFORMATION

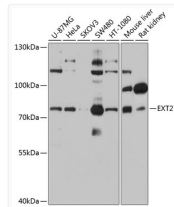
Gene ID	<a href="#">2132</a>
Gene Symbol	<a href="#">EXT2</a>
UniProt ID	<a href="#">EXT2_HUMAN</a>
Immunogen Region	80-340
Immunogen Sequence	PHSIESSNDWNVEKRSIRDV PVVRLPADSPIPERGDLSCR MHTCFDVYRCGFNPKNKIKV YIYALKKYYVDDFGVSVSNTI SREYNELLMASDSDYYTDD INRACLFVPSIDVLNQNTLR IKETAQAMAQLSRWDRGTNH LFNMLPGGPPDYNTALDVP RDRALLAGGGFSTWYRQGY DVSIPVYSPLSAEVDLPEKG PGPRQYFLLSSQVGLHPEYR EDLEALQVKHGESVLLVLDK
Specificity	Recombinant fusion protein containing a sequence corresponding to amino acids 80-340 of human EXT2 (NP_000392.3).

### ADDITIONAL INFORMATION

Note **STRICTLY FOR FURTHER SCIENTIFIC RESEARCH USE ONLY (RUO). MUST NOT TO BE USED IN DIAGNOSTIC OR THERAPEUTIC APPLICATIONS.**



Immunofluorescence analysis of L929 cells using EXT2 Rabbit polyclonal antibody (STJ111122) at dilution of 1:100 (40x lens). Blue: DAPI for nuclear staining.



Western blot analysis of extracts of various cell lines, using EXT2 antibody (STJ111122) at 1:1000 dilution. Secondary antibody: HRP Goat Anti-Rabbit IgG (H+L) (STJS000856) at 1:10000 dilution. Lysates/proteins: 25 Mu g per lane. Blocking buffer: 3% nonfat dry milk in TBST. Detection: ECL Basic Kit. Exposure time: 30s.