

## Anti-LGALS1 antibody (1-135) (STJ111097)

### GENERAL INFORMATION

Product Type	Primary antibodies
Applications	WB/IF/ICC/ELISA
Host / Source	Rabbit
Reactivity	Human/Mouse/Rat

### PRODUCT PROPERTIES

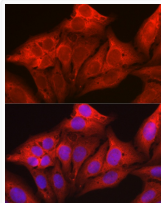
Clonality	Polyclonal
Concentration	Lot specific
Conjugation	Unconjugated
Purification	Affinity purification
Dilution Range	WB:1:500-1:1000 IF/CC:1:50-1:200 ELISA:Recommended starting concentration is 1 Mu g/mL. Please optimize the concentration based on your specific assay requirements.
Formulation	PBS with 0.05% Proclin300, 50% Glycerol, pH 7.3.
Isotype	IgG
Molecular Weight	Protein Mw: 15kDa Observed Mw: 14kDa
Storage Instruction	Store at -20°C for up to 1 year from the date of receipt, and avoid repeat freeze-thaw cycles.

### TARGET INFORMATION

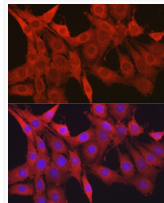
Gene ID	<a href="#">3956</a>
Gene Symbol	<a href="#">LGALS1</a>
UniProt ID	<a href="#">LEG1_HUMAN</a>
Immunogen Region	1-135
Immunogen Sequence	MACGLVASNLNLKPGECLRV RGEVAPDAKSFVLNLGKDSN NLCLHFNPRFNAHGDANTIV CNSKDGGAWGTEQREAVFPF QPGSVAEVCITFDQANLTVK LPDGYEFKFPNRLNLEAINY MAADGDFKIKCVAFD
Specificity	Recombinant fusion protein containing a sequence corresponding to amino acids 1-135 of human Galectin 1/Galectin 1/LGALS1 (NP_002296.1).

### ADDITIONAL INFORMATION

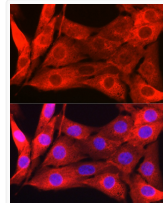
Note **STRICTLY FOR FURTHER SCIENTIFIC RESEARCH USE ONLY (RUO). MUST NOT TO BE USED IN DIAGNOSTIC OR THERAPEUTIC APPLICATIONS.**



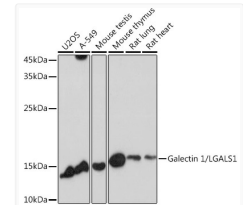
Immunofluorescence analysis of U2OS cells using Galectin 1/LGALS1 Rabbit polyclonal antibody (STJ111097) at dilution of 1:50 (40x lens). Blue: DAPI for nuclear staining.



Immunofluorescence analysis of PC-12 cells using Galectin 1/LGALS1 Rabbit polyclonal antibody (STJ111097) at dilution of 1:50 (40x lens). Blue: DAPI for nuclear staining.



Immunofluorescence analysis of NIH/3T3 cells using Galectin 1/LGALS1 Rabbit polyclonal antibody (STJ111097) at dilution of 1:50 (40x lens). Blue: DAPI for nuclear staining.



Western blot analysis of extracts of various cell lines, using Galectin 1/LGALS1 antibody (STJ111097) at 1:1000 dilution. Secondary antibody: HRP Goat Anti-Rabbit IgG (H+L) (STJS000856) at 1:10000 dilution. Lysates/proteins: 25 Mu g per lane. Blocking buffer: 3% nonfat dry milk in TBST. Detection: ECL Basic Kit. Exposure time: 30s.