

Anti-ITGAX antibody (146-342) (STJ111096)

GENERAL INFORMATION

| | |
|---------------|--------------------|
| Product Type | Primary antibodies |
| Applications | WB/IF/ICC/ELISA |
| Host / Source | Rabbit |
| Reactivity | Human/Mouse/Rat |

PRODUCT PROPERTIES

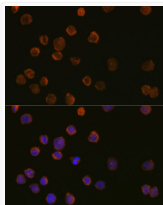
| | |
|---------------------|--|
| Clonality | Polyclonal |
| Concentration | Lot specific |
| Conjugation | Unconjugated |
| Purification | Affinity purification |
| Dilution Range | WB:1:500-1:1000 IF/CC:1:50-1:200 ELISA:Recommended starting concentration is 1 Mu g/mL. Please optimize the concentration based on your specific assay requirements. |
| Formulation | PBS with 0.02% Sodium Azide, 50% Glycerol, pH 7.3. |
| Isotype | IgG |
| Molecular Weight | Protein Mw: 128kDa Observed Mw: 150kDa |
| Storage Instruction | Store at -20°C for up to 1 year from the date of receipt, and avoid repeat freeze-thaw cycles. |

TARGET INFORMATION

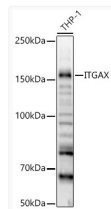
| | |
|--------------------|--|
| Gene ID | 3687 |
| Gene Symbol | ITGAX |
| UniProt ID | ITAX_HUMAN |
| Immunogen Region | 146-342 |
| Immunogen Sequence | PRQEQDIVFLIDGSGSISR NFATMMNFVRAVISQFQRPS TQFSLMQVFSNKFQTHFTFEE FRSSNPLSLLASVHQLQGF TYTATAIQNVVHRLFHASYG ARRDAAKILIVITDGKKEGD SLDYKDVIPMADAAGIIRYA IGVGLAFQNRNSWKELNDIA SKPSQEHIKFVEDFDALKDI QNQLKEKIFAIEGTETT |
| Specificity | Recombinant fusion protein containing a sequence corresponding to amino acids 146-342 of ITGAX (NP_000878.2). |

ADDITIONAL INFORMATION

Note **STRICTLY FOR FURTHER SCIENTIFIC RESEARCH USE ONLY (RUO). MUST NOT TO BE USED IN DIAGNOSTIC OR THERAPEUTIC APPLICATIONS.**



Immunofluorescence analysis of THP-1 cells using ITGAX Rabbit polyclonal antibody (STJ111096) at dilution of 1:100 (40x lens). Secondary antibody: Cy3 Goat Anti-Rabbit IgG (H+L) at 1:500 dilution. Blue: DAPI for nuclear staining.



Western blot analysis of lysates from THP-1 cells, using ITGAX Rabbit polyclonal antibody (STJ111096) at 1:1000 dilution. Secondary antibody: HRP Goat Anti-Rabbit IgG (H+L) (STJS000856) at 1:10000 dilution. Lysates/proteins: 25 Mu g per lane. Blocking buffer: 3% nonfat dry milk in TBST. Detection: ECL Basic Kit. Exposure time: 60s.