

Anti-Phospho-PLC gamma 1-S1248 antibody [SRM5544] (STJ11107733)

GENERAL INFORMATION

Product Type	Primary antibodies
Applications	WB/ELISA
Host / Source	Rabbit
Reactivity	Human/Mouse

PRODUCT PROPERTIES

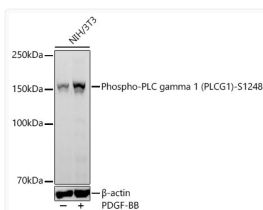
Clonality	Monoclonal
Concentration	Lot specific
Conjugation	Unconjugated
Purification	Affinity purification
Dilution Range	WB:1:1000-1:5000 ELISA:Recommended starting concentration is 1 Mu g/mL. Please optimize the concentration based on your specific assay requirements.
Formulation	PBS with 0.05% Proclin300, 0.05% BSA, 50% Glycerol, pH 7.3.
Isotype	IgG
Molecular Weight	Protein Mw: 149kDa Observed Mw: 152kDa
Storage Instruction	Store at -20°C for up to 1 year from the date of receipt, and avoid repeat freeze-thaw cycles.

TARGET INFORMATION

Gene ID	5335
Gene Symbol	PLCG1
UniProt ID	PLCG1_HUMAN
Immunogen Sequence	EGS (P) FE
Specificity	A synthetic phosphorylated peptide around S1248 of human PLC gamma 1 (PLCG1) (NP_877963.1).

ADDITIONAL INFORMATION

Note STRICTLY FOR FURTHER SCIENTIFIC RESEARCH USE ONLY (RUO). MUST NOT TO BE USED IN DIAGNOSTIC OR THERAPEUTIC APPLICATIONS.



Western blot analysis of lysates from NIH/3T3 cells using Phospho-PLC gamma 1 (PLCG1) - S1248 Rabbit mAb (STJ11107733) at 1:3000 dilution incubated overnight at 4C. NIH/3T3 cells were treated by PDGF-BB (100 ng/ml) for 30 minutes.

Secondary antibody: HRP-conjugated Goat anti-Rabbit IgG (H+L) (STJS000856) at 1:10000 dilution.

Lysates/proteins: 30 Mu g per lane.
Blocking buffer: 3 % nonfat dry milk in TBST.
Detection: ECL Basic Kit
Exposure time: 30s.