

Anti-Phospho-NF2-S518 antibody (STJ11107692)

GENERAL INFORMATION

Product Type	Primary antibodies
Applications	WB/IHC-P/ELISA
Host / Source	Rabbit
Reactivity	Human/Mouse/Rat

PRODUCT PROPERTIES

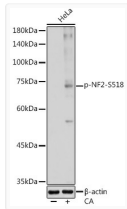
Clonality	Polyclonal
Concentration	Lot specific
Conjugation	Unconjugated
Purification	Affinity purification
Dilution Range	WB:1:500-1:1000 IHC-P:1:50-1:200 ELISA:Recommended starting concentration is 1 Mu g/mL. Please optimize the concentration based on your specific assay requirements.
Formulation	PBS with 0.09% Sodium Azide, 50% Glycerol, pH7.3.
Isotype	IgG
Molecular Weight	Protein Mw: 70kDa Observed Mw: 70kDa
Storage Instruction	Store at -20°C for up to 1 year from the date of receipt, and avoid repeat freeze-thaw cycles.

TARGET INFORMATION

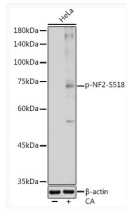
Gene ID	4771
Gene Symbol	NF2
UniProt ID	MERL_HUMAN
Immunogen Sequence	RLSME
Specificity	A synthetic phosphorylated peptide around S518 of human NF2 (NP_000259.1).

ADDITIONAL INFORMATION

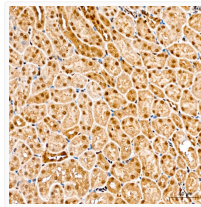
Note STRICTLY FOR FURTHER SCIENTIFIC RESEARCH USE ONLY (RUO). MUST NOT TO BE USED IN DIAGNOSTIC OR THERAPEUTIC APPLICATIONS.



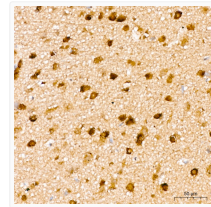
Western blot analysis of lysates from HeLa cells, using Phospho-NF2-S518 Rabbit pAb (STJ11107692) at 1:1000 dilution. HeLa cells were treated by Calyculin A (100 nM) at 37 °C for 30 minutes after serum-starvation overnight. Secondary antibody: HRP-conjugated Goat anti-Rabbit IgG (H+L) (STJS000856) at 1:10000 dilution.
Lysates/proteins: 25 Mu g per lane.
Blocking buffer: 3% nonfat dry milk in TBST.
Detection: ECL Basic Kit
Exposure time: 10s.



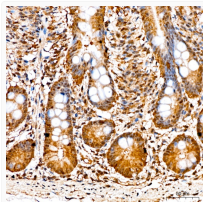
Western blot analysis of lysates from HeLa cells, using Phospho-NF2-S518 Rabbit pAb (STJ11107692) at 1:1000 dilution. HeLa cells were treated by Calyculin A (100 nM) at 37C for 30 minutes after serum-starvation overnight. Secondary antibody: HRP-conjugated Goat anti-Rabbit IgG (H+L) (STJS000856) at 1:10000 dilution.
Lysates/proteins: 25 Mu g per lane.
Blocking buffer: 3% nonfat dry milk in TBST.
Detection: ECL Basic Kit
Exposure time: 10s.



Immunohistochemistry analysis of paraffin-embedded Mouse kidney tissue using Phospho-NF2-S518 Rabbit pAb (STJ11107692) at a dilution of 1:200 (40x lens). High pressure antigen retrieval performed with 0.01M Citrate Bufferr (pH 6.0) prior to immunohistochemistry staining.



Immunohistochemistry analysis of paraffin-embedded Rat brain tissue using Phospho-NF2-S518 Rabbit pAb (STJ11107692) at a dilution of 1:200 (40x lens). High pressure antigen retrieval performed with 0.01M Citrate Bufferr (pH 6.0) prior to immunohistochemistry staining.



Immunohistochemistry analysis of paraffin-embedded Human small intestine tissue using Phospho-NF2-S518 Rabbit pAb (STJ11107692) at a dilution of 1:200 (40x lens). High pressure antigen retrieval performed with 0.01M Citrate Bufferr (pH 6.0) prior to immunohistochemistry staining.