

## Anti-mCherry-Tag antibody (1-236 aa) [SRM5527] (STJ11107600)

### GENERAL INFORMATION

Product Type	Primary antibodies
Applications	WB/IP/ELISA
Host / Source	Rabbit
Reactivity	Species Independent

### PRODUCT PROPERTIES

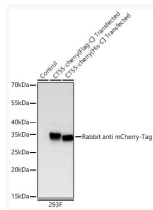
Clonality	Monoclonal
Concentration	Lot specific
Conjugation	Unconjugated
Purification	Affinity purification
Dilution Range	WB:1:10000-1:40000 IP:0.5 Mu g-4 Mu g antibody for 200 Mu g-600 Mu g extracts of whole cells ELISA:Recommended starting concentration is 1 Mu g/mL. Please optimize the concentration based on your specific assay requirements.
Formulation	PBS with 0.09% Sodium Azide, 0.05% BSA, 50% Glycerol, pH 7.3.
Isotype	IgG
Molecular Weight	33kDa
Storage Instruction	Store at-20°C for up to 1 year from the date of receipt, and avoid repeat freeze-thaw cycles.

### TARGET INFORMATION

Immunogen Region	1-236 aa
Immunogen Sequence	MVSKGEEDNMAIIEKFMRFK VHMEGSVNGHEFEIEGEGEG RPYEGTQTAKLKVTKGGPLP FAWDILSPQFMYGSKAYVKH PADIPDYLKLSFPEGFKWER VMNFEDGGVVTVTQDSSLQD GEFIYKVKLRGTNFPDGPV MQKKTMGWEASSERMYPEDG ALKGEIKQRLKLDGGHYDA EVKTTYKAKKPVQLPGAYNV NIKLDITSHNEDYTIVEQYE RAEGRHSTGGMDELYK
Specificity	Recombinant fusion protein containing a sequence corresponding to amino acids 1-236 of Discosoma MCherry fluorescent proteinm.

### ADDITIONAL INFORMATION

Note STRICTLY FOR FURTHER SCIENTIFIC RESEARCH USE ONLY (RUO). MUST NOT TO BE USED IN DIAGNOSTIC OR THERAPEUTIC APPLICATIONS.



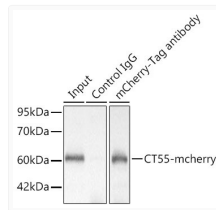
Western blot analysis of lysates from wild type (WT) and 293F cells transfected with mCherry using Rabbit anti mCherry-Tag mAb (STJ11107600) at 1:20000 dilution incubated overnight at 4C.

Secondary antibody: HRP-conjugated Goat anti-Rabbit IgG (H+L) (STJS000856) at 1:10000 dilution.

Lysates/proteins: 20 Mu g per lane.

Blocking buffer: 3% nonfat dry milk in TBST.

Detection: ECL Basic Kit ( Exposure time: 45s.



Immunoprecipitation of CT55-mCherry from 300 µg extracts of 293F cells transfected with a CT55 expression vector containing a single C-terminal mCherry-Tag was performed using 3 µg of mCherry-Tag Rabbit mAb (STJ11107600). Rabbit IgG isotype control (STJ11105763) was used to precipitate the Control IgG sample. IP samples were eluted with 1X Laemmli Buffer. The Input lane represents 10 % of the total input. Western blot analysis of immunoprecipitates was conducted using mCherry-Tag Rabbit mAb (STJ11107600) at a dilution of 1:6000.