

Anti-GFP-Tag antibody (1-238 aa) [SRM5520] {Magnetic Beads} (STJ11107593)

GENERAL INFORMATION

Product Type	Primary antibodies
Applications	IP
Host / Source	Rabbit
Reactivity	Species Independent

PRODUCT PROPERTIES

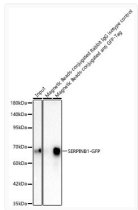
Clonality	Monoclonal
Concentration	Lot specific
Conjugation	Magnetic Beads
Purification	Affinity purification
Dilution Range	IP:20 Mu I-40 Mu I Magnetic Beads fog extracts of whole cr 100 Mu g-300 Mu ells
Formulation	PBS with 0.09% Sodium Azide, 50% Glycerol, pH 7.3.
Isotype	IgG
Molecular Weight	Refer to figures
Storage Instruction	Store at 4°C for up to 1 year from the date of receipt. Do not freeze.

TARGET INFORMATION

Immunogen Region	1-238 aa
Immunogen Sequence	MSKGEELFTGVVPILVELDG DVNGHKFSVSGEGEGDATYG KLTCLKICTTGKLPVWPPTL VTTLTYGVQCFSRYPDHMKR HDFSAMPEGYVQERTISF KDDGNYKTRAEVKFEGDTLV NRIELKGIDFKEDGNILGHK LEYNYNSHNVYITADKQKNG IKANFKTRHNIEDGGVQLAD HYQQNTPIGDGPVLLPDNHY LSTQSALS KDPNEKRDHMLV LEFVTAAGITHGMDELYK
Specificity	Recombinant fusion protein containing a sequence corresponding to amino acids 1-238 of GFP.

ADDITIONAL INFORMATION

Note **STRICTLY FOR FURTHER SCIENTIFIC RESEARCH USE ONLY (RUO). MUST NOT TO BE USED IN DIAGNOSTIC OR THERAPEUTIC APPLICATIONS.**



Immunoprecipitation of SERPINB1-GFP in 150 µg extracts from 293F cells transfected with SERPINB1-GFP using 20 µl Magnetic Beads-conjugated Rabbit anti GFP-Tag mAb (STJ11107593). Western blot analysis was performed using HRP-conjugated Mouse anti GFP-Tag mAb (STJ11105766) at 1:5000 dilution.