

Anti-His-Tag antibody [SRM5517] {HRP} (STJ11107589)

GENERAL INFORMATION

Product Type	Primary antibodies
Applications	WB/ELISA
Host / Source	Rabbit
Reactivity	Species Independent

PRODUCT PROPERTIES

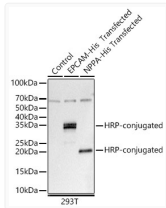
Clonality	Monoclonal
Concentration	Lot specific
Conjugation	HRP
Purification	Affinity purification
Dilution Range	WB:1:2000-1:10000 ELISA:Recommended starting concentration is 1 Mu g/mL. Please optimize the concentration based on your specific assay requirements.
Formulation	PBS with 0.03% Proclin300, 50% Glycerol, pH 7.3.
Isotype	IgG2Bk
Molecular Weight	17kDa (NPPA-His) /35kDa (EPCAM-His)
Storage Instruction	Store at -20°C for up to 1 year from the date of receipt, and avoid repeat freeze-thaw cycles.

TARGET INFORMATION

Specificity	A synthetic peptide corresponding to His tag.The antibody may cross-react with a protein of unknown origin ~60-70kDa.
-------------	---

ADDITIONAL INFORMATION

Note STRICTLY FOR FURTHER SCIENTIFIC RESEARCH USE ONLY (RUO). MUST NOT TO BE USED IN DIAGNOSTIC OR THERAPEUTIC APPLICATIONS.



Western blot analysis of various lysates, using HRP-conjugated Rabbit anti His-Tag mAb (STJ11107589) at 1:10000 dilution. Lysates/proteins: 25 Mu g per lane. Blocking buffer: 3% nonfat dry milk in TBST. Detection: ECL Basic Kit. Exposure time: 0. 09s.