

## Anti-RFP-Tag antibody [SMM5503] (STJ11107573)

### GENERAL INFORMATION

Product Type	Primary antibodies
Applications	WB/ELISA
Host / Source	Mouse
Reactivity	Species Independent

### PRODUCT PROPERTIES

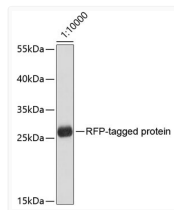
Clonality	Monoclonal
Concentration	Lot specific
Conjugation	Unconjugated
Purification	Affinity purification
Dilution Range	WB:1:5000-1:20000 ELISA:Recommended starting concentration is 1 Mu g/mL. Please optimize the concentration based on your specific assay requirements.
Formulation	PBS with 0.02% Sodium Azide, 50% Glycerol, pH 7.3.
Isotype	IgG1
Molecular Weight	Protein Mw: 27kDa Observed Mw: Refer to Figures

### TARGET INFORMATION

Immunogen Sequence	MASSENVITEFMRFKVRMEG TVNGHEFEIEGEGEGRPYEG HNTVKLKVTKGGPLPFAWDI LSPQFQYGSKVYVKHPADIP DYKCLSFEFGFKWERVMNFE DGGVATVTQDSSLQDGCIFY KVKFIGVNFPSDGPVMQKKT MGWEASTERLYPRDGVKGE THKALKLKDGGHYLVEFKSI YMAKKPVQLPGYYYVDAKLD ITSHNEDYTIVEQYERTEGR HHLFL
Specificity	Recombinant protein of RFP-Tag

### ADDITIONAL INFORMATION

Note STRICTLY FOR FURTHER SCIENTIFIC RESEARCH USE ONLY (RUO). MUST NOT TO BE USED IN DIAGNOSTIC OR THERAPEUTIC APPLICATIONS.



Western blot analysis of recombinant RFP protein using Mouse anti RFP-Tag mAb (STJ11107573) at dilution of 1:10000.

Secondary antibody: HRP-conjugated Goat anti-Mouse IgG (H+L) (STJS000854) at 1:10000 dilution.

Lysates/proteins: 10ng per lane.

Blocking buffer: 3% nonfat dry milk in TBST.