

## Anti-TMBIM1 antibody (1-100 aa) (STJ11107508)

### GENERAL INFORMATION

Product Type	Primary antibodies
Applications	WB/IF/ICC/ELISA
Host / Source	Rabbit
Reactivity	Human/Mouse

### PRODUCT PROPERTIES

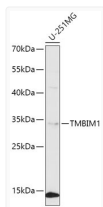
Clonality	Polyclonal
Concentration	Lot specific
Conjugation	Unconjugated
Purification	Affinity purification
Dilution Range	WB:1:500-1:2000 IF/CC:1:50-1:200 ELISA:Recommended starting concentration is 1 Mu g/mL. Please optimize the concentration based on your specific assay requirements.
Formulation	PBS with 0.02% Sodium Azide, 50% Glycerol, pH 7.3.
Isotype	IgG
Molecular Weight	Protein Mw: 35kDa Observed Mw: 35kDa
Storage Instruction	Store at -20°C for up to 1 year from the date of receipt, and avoid repeat freeze-thaw cycles.

### TARGET INFORMATION

Gene ID	<a href="#">64114</a>
Gene Symbol	<a href="#">TMBIM1</a>
UniProt ID	<a href="#">LFG3_HUMAN</a>
Immunogen Region	1-100 aa
Immunogen Sequence	MSNPSAPPPYEDRNPLYPGP PPPGGYGQPSVLPGGYPAYP GYPQPGYGHYPAGYPQMPPT HPMPMNYGPGHGYDGEERAV SDSFGPGEWDDRKVRHTFIR
Specificity	A synthetic peptide corresponding to a sequence within amino acids 1-100 of human TMBIM1 (NP_071435.2).

### ADDITIONAL INFORMATION

Note STRICTLY FOR FURTHER SCIENTIFIC RESEARCH USE ONLY (RUO). MUST NOT TO BE USED IN DIAGNOSTIC OR THERAPEUTIC APPLICATIONS.



Western blot analysis of lysates from U-251MG cells, using TMBIM1 Rabbit pAb (STJ11107508) at 1:1000 dilution.

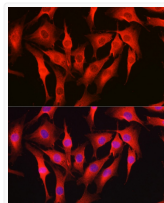
Secondary antibody: HRP-conjugated Goat anti-Rabbit IgG (H+L) (STJS000856) at 1:10000 dilution.

Lysates/proteins: 25 Mu g per lane.

Blocking buffer: 3% nonfat dry milk in TBST.

Detection: ECL Basic Kit

Exposure time: 3min.



Immunofluorescence analysis of NIH-3T3 cells using TMBIM1 Rabbit pAb (STJ11107508) at dilution of 1:100 (40x lens). Secondary antibody: Cy3-conjugated Goat anti-Rabbit IgG (H+L) (STJS001166) at 1:500 dilution. Blue: DAPI for nuclear staining.