

## Anti-HOMER1 antibody (125-354 aa) (STJ11107406)

### GENERAL INFORMATION

Product Type	Primary antibodies
Applications	WB/IF/ICC/ELISA
Host / Source	Rabbit
Reactivity	Human/Mouse/Rat

### PRODUCT PROPERTIES

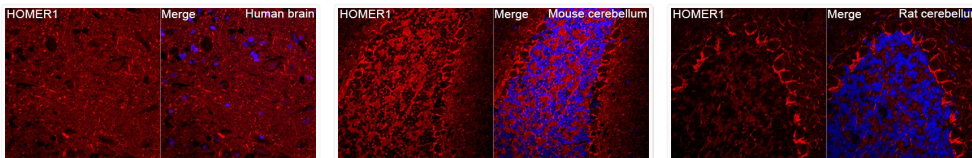
Clonality	Polyclonal
Concentration	Lot specific
Conjugation	Unconjugated
Purification	Affinity purification
Dilution Range	WB:1:500-1:1000 IF/CC:1:50-1:200 ELISA:Recommended starting concentration is 1 µg/mL. Please optimize the concentration based on your specific assay requirements.
Formulation	PBS with 0.05% Proclin300, 50% Glycerol, pH 7.3.
Isotype	IgG
Molecular Weight	Protein Mw: 40kDa Observed Mw: 42kDa
Storage Instruction	Store at -20°C for up to 1 year from the date of receipt, and avoid repeat freeze-thaw cycles.

### TARGET INFORMATION

Gene ID	<a href="#">9456</a>
Gene Symbol	<a href="#">HOMER1</a>
UniProt ID	<a href="#">HOME1_HUMAN</a>
Immunogen Region	125-354 aa
Immunogen Sequence	STPSQESAGGDLQSP LTPES INGTDDEPTDVTQNSEPRA EPTQNALPFSHSSAISKHWE AELATLKGNNAKLTAALLES TANVKQWKQLAAYQEEAER LHKRVTELEC VSSQANAVHT HKTELNQTIQELEETLKLKE EEIERLKQEIDNARELQEQR DSLTQKLQVEIRNKDLEGQ LSDLEQRLEKSQNEQEA FRN NLKTLLEILDGKIFELTELR DNLAKLLECS
Specificity	Recombinant fusion protein containing a sequence corresponding to amino acids 125-354 of human HOMER1 (NP_004263.1).

### ADDITIONAL INFORMATION

Note STRICTLY FOR FURTHER SCIENTIFIC RESEARCH USE ONLY (RUO). MUST NOT TO BE USED IN DIAGNOSTIC OR THERAPEUTIC APPLICATIONS.



Immunofluorescence analysis of paraffin-embedded Human brain tissue using HOMER1 Rabbit pAb (STJ11107406) at a dilution of 1:200 (40x lens). Secondary antibody: Cy3-conjugated Goat anti-Rabbit IgG (H+L) (STJS001166) at 1:500 dilution. Blue: DAPI for nuclear staining. Perform microwave antigen retrieval with 0.01 M citrate buffer (pH 6.0) prior to IF staining.

Immunofluorescence analysis of paraffin-embedded Mouse cerebellum tissue using HOMER1 Rabbit pAb (STJ11107406) at a dilution of 1:200 (40x lens). Secondary antibody: Cy3-conjugated Goat anti-Rabbit IgG (H+L) (STJS001166) at 1:500 dilution. Blue: DAPI for nuclear staining. Perform microwave antigen retrieval with 0.01 M citrate buffer (pH 6.0) prior to IF staining.

Immunofluorescence analysis of paraffin-embedded Rat cerebellum tissue using HOMER1 Rabbit pAb (STJ11107406) at a dilution of 1:200 (40x lens). Secondary antibody: Cy3-conjugated Goat anti-Rabbit IgG (H+L) (STJS001166) at 1:500 dilution. Blue: DAPI for nuclear staining. Perform microwave antigen retrieval with 0.01 M citrate buffer (pH 6.0) prior to IF staining.