

Anti-Tgfb1 antibody (30-390 aa) [SRM5471] (STJ11107390)

GENERAL INFORMATION

Product Type	Primary antibodies
Applications	WB/IHC-P/ELISA
Host / Source	Rabbit
Reactivity	Mouse/Rat

PRODUCT PROPERTIES

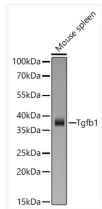
Clonality	Monoclonal
Concentration	Lot specific
Conjugation	Unconjugated
Purification	Affinity purification
Dilution Range	WB:1:1000-1:2000 IHC-P:1:200-1:400 ELISA:Recommended starting concentration is 1 µg/mL. Please optimize the concentration based on your specific assay requirements.
Formulation	PBS with 0.09% Sodium Azide, 0.05% BSA, 50% Glycerol, pH 7.3.
Isotype	IgG
Molecular Weight	Protein Mw: 44kDa Observed Mw: 44kDa
Storage Instruction	Store at -20°C for up to 1 year from the date of receipt, and avoid repeat freeze-thaw cycles.

TARGET INFORMATION

Gene ID	21803
Gene Symbol	Tgfb1
UniProt ID	TGFB1_MOUSE
Immunogen Region	30-390 aa
Immunogen Sequence	LSTCKTIDMELVKRKRIEAI RQILSKLRLASPPSQGEVP PGPLPEAVLALYNSTRDRVA GESADPEPEPEADYYAKEVT RVLMDVRNNAIYEKTKDISH SIYMFNTSDIREAVPEPPL LSRAELRLQRLKSSVEQHV E LYQKYSNNSWRYLGNRLTTP TDTPEWLSFDVTVGVVRQWLN QGDGIQGFRRFSAHCSDSKD NKLHVEINGISPKRRGDGDT IHDMMRPFLLLMATPLERA
Specificity	Recombinant fusion protein containing a sequence corresponding to amino acids 30-390 of mouse TGFB1 (NP_035707.1).

ADDITIONAL INFORMATION

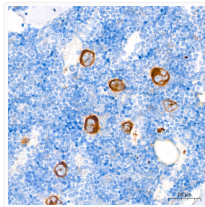
Note STRICTLY FOR FURTHER SCIENTIFIC RESEARCH USE ONLY (RUO). MUST NOT TO BE USED IN DIAGNOSTIC OR THERAPEUTIC APPLICATIONS.



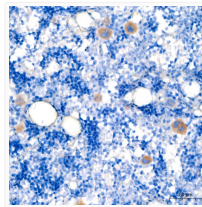
Western blot analysis of lysates from Mouse spleen using Tgfb1 Rabbit mAb (STJ11107390) at 1:1000 dilution incubated overnight at 4C.

Secondary antibody: HRP-conjugated Goat anti-Rabbit IgG (H+L) (STJS000856) at 1:10000 dilution.

Lysates/proteins: 25 µg per lane.
Blocking buffer: 3% nonfat dry milk in TBST.
Detection: ECL Basic Kit
Exposure time: 45s.



Immunohistochemistry analysis of paraffin-embedded Mouse bone marrow tissue using Tgfb1 Rabbit mAb (STJ11107390) at a dilution of 1:200 (40x lens). High pressure antigen retrieval performed with 0.01M Tris-EDTA Buffer (pH 9.0) prior to immunohistochemistry staining.



Immunohistochemistry analysis of paraffin-embedded Rat bone marrow tissue using Tgfb1 Rabbit mAb (STJ11107390) at a dilution of 1:200 (40x lens). High pressure antigen retrieval performed with 0.01M Tris-EDTA Buffer (pH 9.0) prior to immunohistochemistry staining.