

## Anti-DNA-PKcs antibody (4021-4120 aa) [SRM5467] (STJ11107385)

### GENERAL INFORMATION

Product Type	Primary antibodies
Applications	IHC-P/ELISA
Host / Source	Rabbit
Reactivity	Human

### PRODUCT PROPERTIES

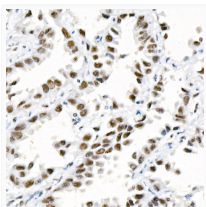
Clonality	Monoclonal
Concentration	Lot specific
Conjugation	Unconjugated
Purification	Affinity purification
Dilution Range	IHC-P:1:100-1:400 ELISA:Recommended starting concentration is 1 µg/mL. Please optimize the concentration based on your specific assay requirements.
Formulation	PBS with 0.09% Sodium Azide, 0.05% BSA, 50% Glycerol, pH 7.3.
Isotype	IgG
Molecular Weight	Protein Mw: 469kDa Observed Mw:
Storage Instruction	Store at -20°C for up to 1 year from the date of receipt, and avoid repeat freeze-thaw cycles.

### TARGET INFORMATION

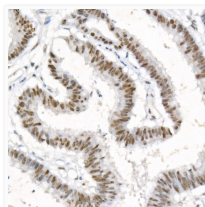
Gene ID	<a href="#">5591</a>
Gene Symbol	<a href="#">PRKDC</a>
UniProt ID	<a href="#">PRKDC_HUMAN</a>
Immunogen Region	4021-4120 aa
Immunogen Sequence	LKKGGSWIQEINVAEKNWYP RQKICYAKRKLAPANPAVIT CDELLLGHEKAPAFRDYVAV ARGSKDHNIRAQEPESGLSE ETQVKCLMDQATDPNILGRT
Specificity	A synthetic peptide corresponding to a sequence within amino acids 4021-4120 of human DNA-PKcs (NP_008835.5).

### ADDITIONAL INFORMATION

Note STRICTLY FOR FURTHER SCIENTIFIC RESEARCH USE ONLY (RUO). MUST NOT TO BE USED IN DIAGNOSTIC OR THERAPEUTIC APPLICATIONS.



Immunohistochemistry analysis of paraffin-embedded Human lung cancer tissue using DNA-PKcs Rabbit mAb (STJ11107385) at a dilution of 1:100 (40x lens). High pressure antigen retrieval performed with 0.01M Citrate Buffer (pH 6.0) prior to immunohistochemistry staining.



Immunohistochemistry analysis of paraffin-embedded Human colon carcinoma tissue using DNA-PKcs Rabbit mAb (STJ11107385) at a dilution of 1:100 (40x lens). High pressure antigen retrieval performed with 0.01M Citrate Buffer (pH 6.0) prior to immunohistochemistry staining.