

## Anti-CD299/DC-SIGNR antibody (71-399 aa) [SRM5466] (STJ11107384)

### GENERAL INFORMATION

|               |                    |
|---------------|--------------------|
| Product Type  | Primary antibodies |
| Applications  | WB/IF/ICC/ELISA    |
| Host / Source | Rabbit             |
| Reactivity    | Human/Rat          |

### PRODUCT PROPERTIES

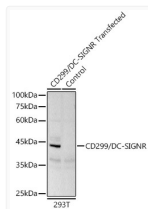
|                     |  |
|---------------------|--|
| Clonality           | Monoclonal   |
| Concentration       | Lot specific   |
| Conjugation         | Unconjugated   |
| Purification        | Affinity purification  |
| Dilution Range      | WB:1:1000-1:3000<br>IF/CC:1:100-1:400<br>ELISA:Recommended starting concentration is 1 µg/mL. Please optimize the concentration based on your specific assay requirements. |
| Formulation         | PBS with 0.09% Sodium Azide, 0.05% BSA, 50% Glycerol, pH 7.3.  |
| Isotype             | IgG  |
| Molecular Weight    | Protein Mw: 45kDa<br>Observed Mw: 45kDa  |
| Storage Instruction | Store at -20°C for up to 1 year from the date of receipt, and avoid repeat freeze-thaw cycles.   |

### TARGET INFORMATION

|                    |  |
|--------------------|--|
| Gene ID            | <a href="#">10332</a>  |
| Gene Symbol        | <a href="#">CLEC4M</a>   |
| UniProt ID         | <a href="#">CLC4M_HUMAN</a>  |
| Immunogen Region   | 71-399 aa  |
| Immunogen Sequence | QVSKVPSSLSQEQSEQDAIY QNLTQLKAAVGESEKSKLQ EIYQELTQLKAAVGEPEKS<br>KLQEIQELTRLKAAVGEPEKSKLQEIQELTRLKAAVGEPEKSKLQEIQELTRLKAA<br>AVGEPEKSKLQEIQELTE LKAAVGEPEKSKLQEIQE LTQLKAAVGEPEKSKLQEIQE<br>YQELTDLKTAFERLCRHCPK DWTFFQGNCYFMSNSQRNWH DSVTACQEVRAQLVVIKTA |
| Specificity        | Recombinant fusion protein containing a sequence corresponding to amino acids 71-399 of human DC-SIGNR/CD299 (NP_055072.3).  |

### ADDITIONAL INFORMATION

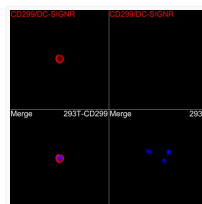
Note STRICTLY FOR FURTHER SCIENTIFIC RESEARCH USE ONLY (RUO). MUST NOT TO BE USED IN DIAGNOSTIC OR THERAPEUTIC APPLICATIONS.



Western blot analysis of lysates from wild type (WT) and 293T cells transfected with CD299/DC-SIGNR using CD299/DC-SIGNR Rabbit mAb (STJ11107384) at 1:3000 dilution incubated overnight at 4°C.

Secondary antibody: HRP-conjugated Goat anti-Rabbit IgG (H+L) (STJS000856) at 1:10000 dilution.

Lysates/proteins: 20 µg per lane.  
Blocking buffer: 3% nonfat dry milk in TBST.  
Detection: ECL Basic Kit ( Exposure time: 180s.



Immunofluorescence analysis of 293T cells transfected with CD299/DC-SIGNR using CD299/DC-SIGNR Rabbit mAb (STJ11107384) at a dilution of 1:200 (40x lens). Secondary antibody: Cy3-conjugated Goat anti-Rabbit IgG (H+L) (STJS001166) at 1:500 dilution. Blue: DAPI for nuclear staining.

Secondary antibody: Cy3-conjugated Goat anti-Rabbit IgG (H+L) (STJS001166) at 1:500 dilution. Blue: DAPI for nuclear staining.

Blue: DAPI for nuclear staining.

Blue: DAPI for nuclear staining.

Blue: DAPI for nuclear staining.

Blue: DAPI for nuclear staining.

Blue: DAPI for nuclear staining.

Blue: DAPI for nuclear staining.

Blue: DAPI for nuclear staining.

Blue: DAPI for nuclear staining.

Blue: DAPI for nuclear staining.

Blue: DAPI for nuclear staining.

Blue: DAPI for nuclear staining.

Blue: DAPI for nuclear staining.

Blue: DAPI for nuclear staining.

Blue: DAPI for nuclear staining.

Blue: DAPI for nuclear staining.

Blue: DAPI for nuclear staining.

Blue: DAPI for nuclear staining.

Blue: DAPI for nuclear staining.

Blue: DAPI for nuclear staining.

Blue: DAPI for nuclear staining.

Blue: DAPI for nuclear staining.

Blue: DAPI for nuclear staining.

Blue: DAPI for nuclear staining.

Blue: DAPI for nuclear staining.

Blue: DAPI for nuclear staining.

Blue: DAPI for nuclear staining.

Blue: DAPI for nuclear staining.

Blue: DAPI for nuclear staining.

Blue: DAPI for nuclear staining.

Blue: DAPI for nuclear staining.

Blue: DAPI for nuclear staining.

Blue: DAPI for nuclear staining.

Blue: DAPI for nuclear staining.

Blue: DAPI for nuclear staining.

Blue: DAPI for nuclear staining.

Blue: DAPI for nuclear staining.

Blue: DAPI for nuclear staining.

Blue: DAPI for nuclear staining.

Blue: DAPI for nuclear staining.

Blue: DAPI for nuclear staining.

Blue: DAPI for nuclear staining.

Blue: DAPI for nuclear staining.

Blue: DAPI for nuclear staining.

Blue: DAPI for nuclear staining.

Blue: DAPI for nuclear staining.

Blue: DAPI for nuclear staining.

Blue: DAPI for nuclear staining.

Blue: DAPI for nuclear staining.

Blue: DAPI for nuclear staining.

Blue: DAPI for nuclear staining.

Blue: DAPI for nuclear staining.

Blue: DAPI for nuclear staining.

Blue: DAPI for nuclear staining.

Blue: DAPI for nuclear staining.

Blue: DAPI for nuclear staining.

Blue: DAPI for nuclear staining.

Blue: DAPI for nuclear staining.

Blue: DAPI for nuclear staining.

Blue: DAPI for nuclear staining.

Blue: DAPI for nuclear staining.

Blue: DAPI for nuclear staining.

Blue: DAPI for nuclear staining.

Blue: DAPI for nuclear staining.

Blue: DAPI for nuclear staining.

Blue: DAPI for nuclear staining.

Blue: DAPI for nuclear staining.

Blue: DAPI for nuclear staining.

Blue: DAPI for nuclear staining.

Blue: DAPI for nuclear staining.

Blue: DAPI for nuclear staining.

Blue: DAPI for nuclear staining.

Blue: DAPI for nuclear staining.

Blue: DAPI for nuclear staining.

Blue: DAPI for nuclear staining.

Blue: DAPI for nuclear staining.

Blue: DAPI for nuclear staining.

Blue: DAPI for nuclear staining.

Blue: DAPI for nuclear staining.

Blue: DAPI for nuclear staining.

Blue: DAPI for nuclear staining.

Blue: DAPI for nuclear staining.

Blue: DAPI for nuclear staining.

Blue: DAPI for nuclear staining.

Blue: DAPI for nuclear staining.

Blue: DAPI for nuclear staining.

Blue: DAPI for nuclear staining.

Blue: DAPI for nuclear staining.

Blue: DAPI for nuclear staining.

Blue: DAPI for nuclear staining.

Blue: DAPI for nuclear staining.

Blue: DAPI for nuclear staining.

Blue: DAPI for nuclear staining.

Blue: DAPI for nuclear staining.

Blue: DAPI for nuclear staining.

Blue: DAPI for nuclear staining.

Blue: DAPI for nuclear staining.

Blue: DAPI for nuclear staining.

Blue: DAPI for nuclear staining.

Blue: DAPI for nuclear staining.

Blue: DAPI for nuclear staining.

Blue: DAPI for nuclear staining.

Blue: DAPI for nuclear staining.

Blue: DAPI for nuclear staining.

Blue: DAPI for nuclear staining.

Blue: DAPI for nuclear staining.

Blue: DAPI for nuclear staining.

Blue: DAPI for nuclear staining.

Blue: DAPI for nuclear staining.

Blue: DAPI for nuclear staining.

Blue: DAPI for nuclear staining.

Blue: DAPI for nuclear staining.

Blue: DAPI for nuclear staining.

Blue: DAPI for nuclear staining.

Blue: DAPI for nuclear staining.

Blue: DAPI for nuclear staining.

Blue: DAPI for nuclear staining.

Blue: DAPI for nuclear staining.

Blue: DAPI for nuclear staining.

Blue: DAPI for nuclear staining.

Blue: DAPI for nuclear staining.

Blue: DAPI for nuclear staining.

Blue: DAPI for nuclear staining.

Blue: DAPI for nuclear staining.

Blue: DAPI for nuclear staining.

Blue: DAPI for nuclear staining.

Blue: DAPI for nuclear staining.

Blue: DAPI for nuclear staining.

Blue: DAPI for nuclear staining.

Blue: DAPI for nuclear staining.

Blue: DAPI for nuclear staining.

Blue: DAPI for nuclear staining.

Blue: DAPI for nuclear staining.

Blue: DAPI for nuclear staining.

Blue: DAPI for nuclear staining.

Blue: DAPI for nuclear staining.

Blue: DAPI for nuclear staining.

Blue: DAPI for nuclear staining.

Blue: DAPI for nuclear staining.

Blue: DAPI for nuclear staining.

Blue: DAPI for nuclear staining.

Blue: DAPI for nuclear staining.

Blue: DAPI for nuclear staining.

Blue: DAPI for nuclear staining.

Blue: DAPI for nuclear staining.

Blue: DAPI for nuclear staining.

Blue: DAPI for nuclear staining.

Blue: DAPI for nuclear staining.

Blue: DAPI for nuclear staining.

Blue: DAPI for nuclear staining.

Blue: DAPI for nuclear staining.

Blue: DAPI for nuclear staining.

Blue: DAPI for nuclear staining.

Blue: DAPI for nuclear staining.

Blue: DAPI for nuclear staining.

Blue: DAPI for nuclear staining.

Blue: DAPI for nuclear staining.

Blue: DAPI for nuclear staining.

Blue: DAPI for nuclear staining.

Blue: DAPI for nuclear staining.

Blue: DAPI for nuclear staining.

Blue: DAPI for nuclear staining.

Blue: DAPI for nuclear staining.

Blue: DAPI for nuclear staining.

Blue: DAPI for nuclear staining.

Blue: DAPI for nuclear staining.

Blue: DAPI for nuclear staining.

Blue: DAPI for nuclear staining.

Blue: DAPI for nuclear staining.

Blue: DAPI for nuclear staining.

Blue: DAPI for nuclear staining.

Blue: DAPI for nuclear staining.

Blue: DAPI for nuclear staining.

Blue: DAPI for nuclear staining.

Blue: DAPI for nuclear staining.

Blue: DAPI for nuclear staining.

Blue: DAPI for nuclear staining.

Blue: DAPI for nuclear staining.

Blue: DAPI for nuclear staining.

Blue: DAPI for nuclear staining.

Blue: DAPI for nuclear staining.

Blue: DAPI for nuclear staining.

Blue: DAPI for nuclear staining.

Blue: DAPI for nuclear staining.

Blue: DAPI for nuclear staining.

Blue: DAPI for nuclear staining.

Blue: DAPI for nuclear staining.

Blue: DAPI for nuclear staining.

Blue: DAPI for nuclear staining.

Blue: DAPI for nuclear staining.

Blue: DAPI for nuclear staining.

Blue: DAPI for nuclear staining.

Blue: DAPI for nuclear staining.

Blue: DAPI for nuclear staining.

Blue: DAPI for nuclear staining.

Blue: DAPI for nuclear staining.

Blue: DAPI for nuclear staining.

Blue: DAPI for nuclear staining.

Blue: DAPI for nuclear staining.

Blue: DAPI for nuclear staining.

Blue: DAPI for nuclear staining.

Blue: DAPI for nuclear staining.

Blue: DAPI for nuclear staining.

Blue: DAPI for nuclear staining.

Blue: DAPI for nuclear staining.

Blue: DAPI for nuclear staining.

Blue: DAPI for nuclear staining.

Blue: DAPI for nuclear staining.

Blue: DAPI for nuclear staining.

Blue: DAPI for nuclear staining.

Blue: DAPI for nuclear staining.

Blue: DAPI for nuclear staining.

Blue: DAPI for nuclear staining.

Blue: DAPI for nuclear staining.

Blue: DAPI for nuclear staining.

Blue: DAPI for nuclear staining.

Blue: DAPI for nuclear staining.

Blue: DAPI for nuclear staining.

Blue: DAPI for nuclear staining.

Blue: DAPI for nuclear staining.

Blue: DAPI for nuclear staining.

Blue: DAPI for nuclear staining.

Blue: DAPI for nuclear staining.

Blue: DAPI for nuclear staining.

Blue: DAPI for nuclear staining.

Blue: DAPI for nuclear staining.

Blue: DAPI for nuclear staining.

Blue: DAPI for nuclear staining.