

## Anti-Calreticulin antibody (18-203 aa) [SMM5463] (STJ11107378)

### GENERAL INFORMATION

Product Type	Primary antibodies
Applications	WB/IHC-P/IF/ICC/ELISA
Host / Source	Mouse
Reactivity	Human/Mouse/Rat

### PRODUCT PROPERTIES

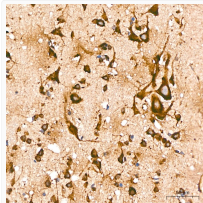
Clonality	Monoclonal
Concentration	Lot specific
Conjugation	Unconjugated
Purification	Affinity purification
Dilution Range	WB:1:2500-1:10000 IHC-P:1:200-1:2000 IF/CC:1:200-1:800 ELISA:Recommended starting concentration is 1 µg/mL. Please optimize the concentration based on your specific assay requirements.
Formulation	PBS with 0.09% Sodium Azide, 0.05% BSA, 50% Glycerol, pH 7.3.
Isotype	IgG
Molecular Weight	Protein Mw: 47kDa Observed Mw: 55kDa
Storage Instruction	Store at -20°C for up to 1 year from the date of receipt, and avoid repeat freeze-thaw cycles.

### TARGET INFORMATION

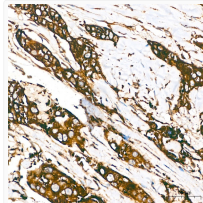
Gene ID	<a href="#">811</a>
Gene Symbol	<a href="#">CALR</a>
UniProt ID	<a href="#">CALR_HUMAN</a>
Immunogen Region	18-203 aa
Immunogen Sequence	EPAVYFKEQFLDGDGWTSRW IESKHKSDFGKFLSSGKFY GDEEKDKGLQTSQDARFYAL SASFEPFSNKGQTLVVOFTV KHEQNIDCGGGYVKLFPNSL DQDTMHGDSEYNIMFGPDIC GPGTKKVHVIFNYKGNLVI NKDIRCKDDEFTHLYTLIVR PDNTYEVKIDNSQVESGSLE DDWDFL
Specificity	Recombinant fusion protein containing a sequence corresponding to amino acids 18-203 of human Calreticulin (NP_004334.1)

### ADDITIONAL INFORMATION

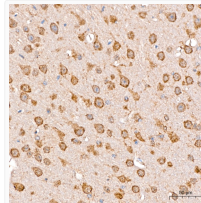
Note STRICTLY FOR FURTHER SCIENTIFIC RESEARCH USE ONLY (RUO). MUST NOT TO BE USED IN DIAGNOSTIC OR THERAPEUTIC APPLICATIONS.



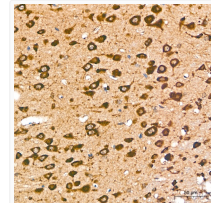
Immunohistochemistry analysis of paraffin-embedded Human brain tissue using Calreticulin Mouse mAb (STJ11107378) at a dilution of 1:200 (40x lens). High pressure antigen retrieval performed with 0.01M Citrate Buffer (pH 6.0) prior to immunohistochemistry staining.



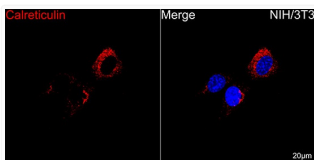
Immunohistochemistry analysis of paraffin-embedded Human breast cancer tissue using Calreticulin Mouse mAb (STJ11107378) at a dilution of 1:200 (40x lens). High pressure antigen retrieval performed with 0.01M Citrate Buffer (pH 6.0) prior to immunohistochemistry staining.



Immunohistochemistry analysis of paraffin-embedded Mouse brain tissue using Calreticulin Mouse mAb (STJ11107378) at a dilution of 1:200 (40x lens). High pressure antigen retrieval performed with 0.01M Citrate Buffer (pH 6.0) prior to immunohistochemistry staining.



Immunohistochemistry analysis of paraffin-embedded Rat brain tissue using Calreticulin Mouse mAb (STJ11107378) at a dilution of 1:200 (40x lens). High pressure antigen retrieval performed with 0.01M Citrate Buffer (pH 6.0) prior to immunohistochemistry staining.



Confocal imaging of NIH/3T3 cells using Calreticulin Mouse mAb (STJ11107378, dilution 1:200) followed by a further incubation with Cy3 Goat Anti-Mouse IgG (H+L) (STJS001167, dilution 1:500) (Red). DAPI was used for nuclear staining (Blue). Objective: 100x.