

## Anti-CD364/PI16 antibody (30-210 aa) [SRM5457] (STJ11107371)

### GENERAL INFORMATION

|               |                    |
|---------------|--------------------|
| Product Type  | Primary antibodies |
| Applications  | WB/ELISA           |
| Host / Source | Rabbit             |
| Reactivity    | Mouse              |

### PRODUCT PROPERTIES

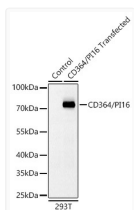
|                     |   |
|---------------------|---|
| Clonality           | Monoclonal  |
| Concentration       | Lot specific  |
| Conjugation         | Unconjugated  |
| Purification        | Affinity purification   |
| Dilution Range      | WB:1:1000-1:6000<br>ELISA:Recommended starting concentration is 1 µg/mL. Please optimize the concentration based on your specific assay requirements. |
| Formulation         | PBS with 0.09% Sodium Azide, 0.05% BSA, 50% Glycerol, pH 7.3.   |
| Isotype             | IgG   |
| Molecular Weight    | Protein Mw: 54kDa<br>Observed Mw: 70kDa   |
| Storage Instruction | Store at -20°C for up to 1 year from the date of receipt, and avoid repeat freeze-thaw cycles.  |

### TARGET INFORMATION

|                    |   |
|--------------------|---|
| Gene ID            | <a href="#">74116</a>   |
| Gene Symbol        | <a href="#">Pi16</a>  |
| UniProt ID         | <a href="#">PI16_MOUSE</a>  |
| Immunogen Region   | 30-210 aa   |
| Immunogen Sequence | LTEDEKQTMVDLHNQYRAQV SPPASDMLQMRWDELAFA KAYAQKCVWGHNKERGRGGE<br>NLFAITDEGMDVPLAVGNWH EEHEYNFSTATCDPNQMC G HYTQVVWSKTERIGCGSHFC<br>ETLQGVVEANIHLVCNYEP PGNVKGKRPYQEGTPCSQCP LGYSCENSLCEPMRNPKEAQ D |
| Specificity        | Recombinant fusion protein containing a sequence corresponding to amino acids 30-210 of mouse CD364/PI16 (NP_076223.3).   |

### ADDITIONAL INFORMATION

Note STRICTLY FOR FURTHER SCIENTIFIC RESEARCH USE ONLY (RUO). MUST NOT TO BE USED IN DIAGNOSTIC OR THERAPEUTIC APPLICATIONS.



Western blot analysis of lysates from wild type (WT) and 293T cells transfected with CD364/PI16 using CD364/PI16 Rabbit mAb (STJ11107371) at 1:1000 dilution incubated overnight at 4°C. Secondary antibody: HRP-conjugated Goat anti-Rabbit IgG (H+L) (STJS000856) at 1:10000 dilution.  
Lysates/proteins: 20 µg per lane.  
Blocking buffer: 3% nonfat dry milk in TBST.  
Detection: ECL Basic Kit ( Exposure time: 10s.