

Anti-ILT4 antibody (22-461 aa) [SRM5456] (STJ11107370)

GENERAL INFORMATION

Product Type	Primary antibodies
Applications	IF/ICC/ELISA
Host / Source	Rabbit
Reactivity	Human

PRODUCT PROPERTIES

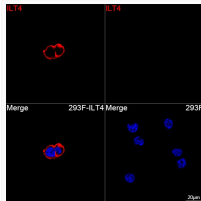
Clonality	Monoclonal
Concentration	Lot specific
Conjugation	Unconjugated
Purification	Affinity purification
Dilution Range	IF/ICC:1:200-1:800 ELISA:Recommended starting concentration is 1 µg/mL. Please optimize the concentration based on your specific assay requirements.
Formulation	PBS with 0.09% Sodium Azide, 0.05% BSA, 50% Glycerol, pH 7.3.
Isotype	IgG
Molecular Weight	Protein Mw: 65kDa Observed Mw: Refer to figures
Storage Instruction	Store at -20°C for up to 1 year from the date of receipt, and avoid repeat freeze-thaw cycles.

TARGET INFORMATION

Gene ID	10288
Gene Symbol	LILRB2
UniProt ID	LILRB2_HUMAN
Immunogen Region	22-461 aa
Immunogen Sequence	QTGTIPKPTLWAEPSVITQ GSPVTLSCQGSLEAQEYRLY REKKSASWITRIRPELVKNG QFHIPSITWEHTGRYGCQYY SRARWSELSDPLVMTGAY PKPTLSAQSPVVTSGGRVT LQCESQVAFGGFILCKEGED EHPQCLNSQPARGSSRAIF SVGPVSPNRRWSHRCYGYDL NSPYVWSSPSDLELLVPGV SKKPSLSVQPGPVMAPGESL TLQCVSDVGYDRFVLYKEG
Specificity	Recombinant fusion protein containing a sequence corresponding to amino acids 22-461 of human ILT4 (NP_001074447.2).

ADDITIONAL INFORMATION

Note STRICTLY FOR FURTHER SCIENTIFIC RESEARCH USE ONLY (RUO). MUST NOT TO BE USED IN DIAGNOSTIC OR THERAPEUTIC APPLICATIONS.



Confocal imaging of 293F cells transfected with ILT4 using ILT4 Rabbit mAb (STJ11107370, dilution 1:200) followed by a further incubation with Cy3 Goat Anti-Rabbit IgG (H+L) (STJS001166, dilution 1:500) (Red). DAPI was used for nuclear staining (Blue). Objective: 100x.