

## Anti-C3AR1 antibody (1-100 aa) [SRM5453] (STJ11107367)

### GENERAL INFORMATION

Product Type	Primary antibodies
Applications	IF/ICC/ELISA
Host / Source	Rabbit
Reactivity	Mouse

### PRODUCT PROPERTIES

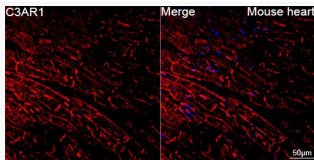
Clonality	Monoclonal
Concentration	Lot specific
Conjugation	Unconjugated
Purification	Affinity purification
Dilution Range	IF/ICC:1:200-1:800 ELISA:Recommended starting concentration is 1 µg/mL. Please optimize the concentration based on your specific assay requirements.
Formulation	PBS with 0.09% Sodium Azide, 0.05% BSA, 50% Glycerol, pH 7.3.
Isotype	IgG
Molecular Weight	Protein Mw: 54kDa Observed Mw: Refer to figures
Storage Instruction	Store at -20°C for up to 1 year from the date of receipt, and avoid repeat freeze-thaw cycles.

### TARGET INFORMATION

Gene ID	<a href="#">719</a>
Gene Symbol	<a href="#">C3AR1</a>
UniProt ID	<a href="#">C3AR_HUMAN</a>
Immunogen Region	1-100 aa
Immunogen Sequence	MAFSFAETNSTDLLSQPWNE PPVILSMVLSLTFLGLPG NGLVLWVAGLKMQRVTNTIW FLHLTLADLLCCLSLPFLSLA HLALQGQWPYGRFLCKLIPS
Specificity	A synthetic peptide corresponding to a sequence within amino acids 1-100 of human C3AR1 (NP_004045.1).

### ADDITIONAL INFORMATION

Note STRICTLY FOR FURTHER SCIENTIFIC RESEARCH USE ONLY (RUO). MUST NOT TO BE USED IN DIAGNOSTIC OR THERAPEUTIC APPLICATIONS.



Confocal imaging of paraffin-embedded Mouse heart tissue using C3AR1 Rabbit mAb (STJ11107367, dilution 1:200) followed by a further incubation with Cy3 Goat Anti-Rabbit IgG (H+L) (STJS001166, dilution 1:500) (Red). DAPI was used for nuclear staining (Blue). High pressure antigen retrieval performed with 0.01M Citrate Buffer (pH 6.0) prior to IF staining. Objective: 40x.